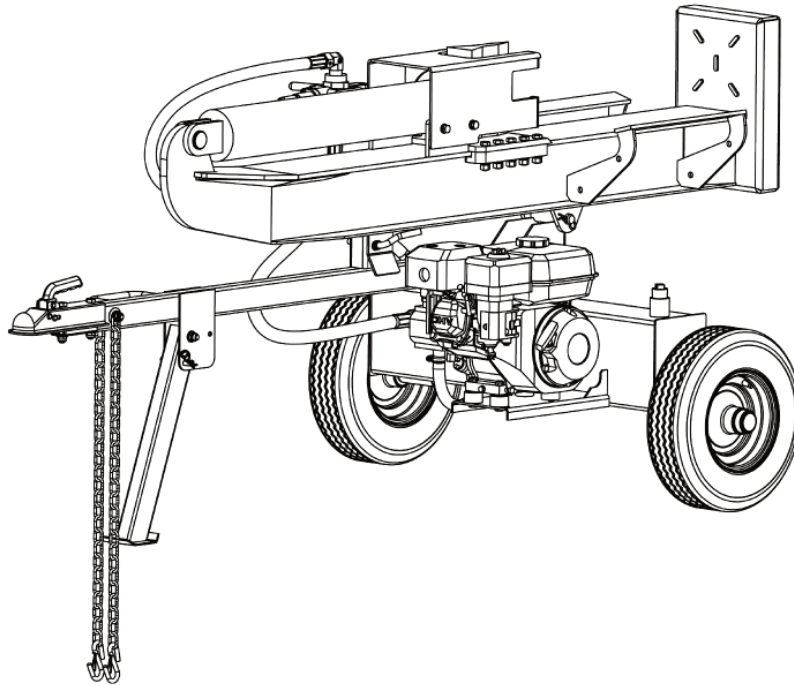


DUCAR

Diagramme de pièces *Parts diagram*

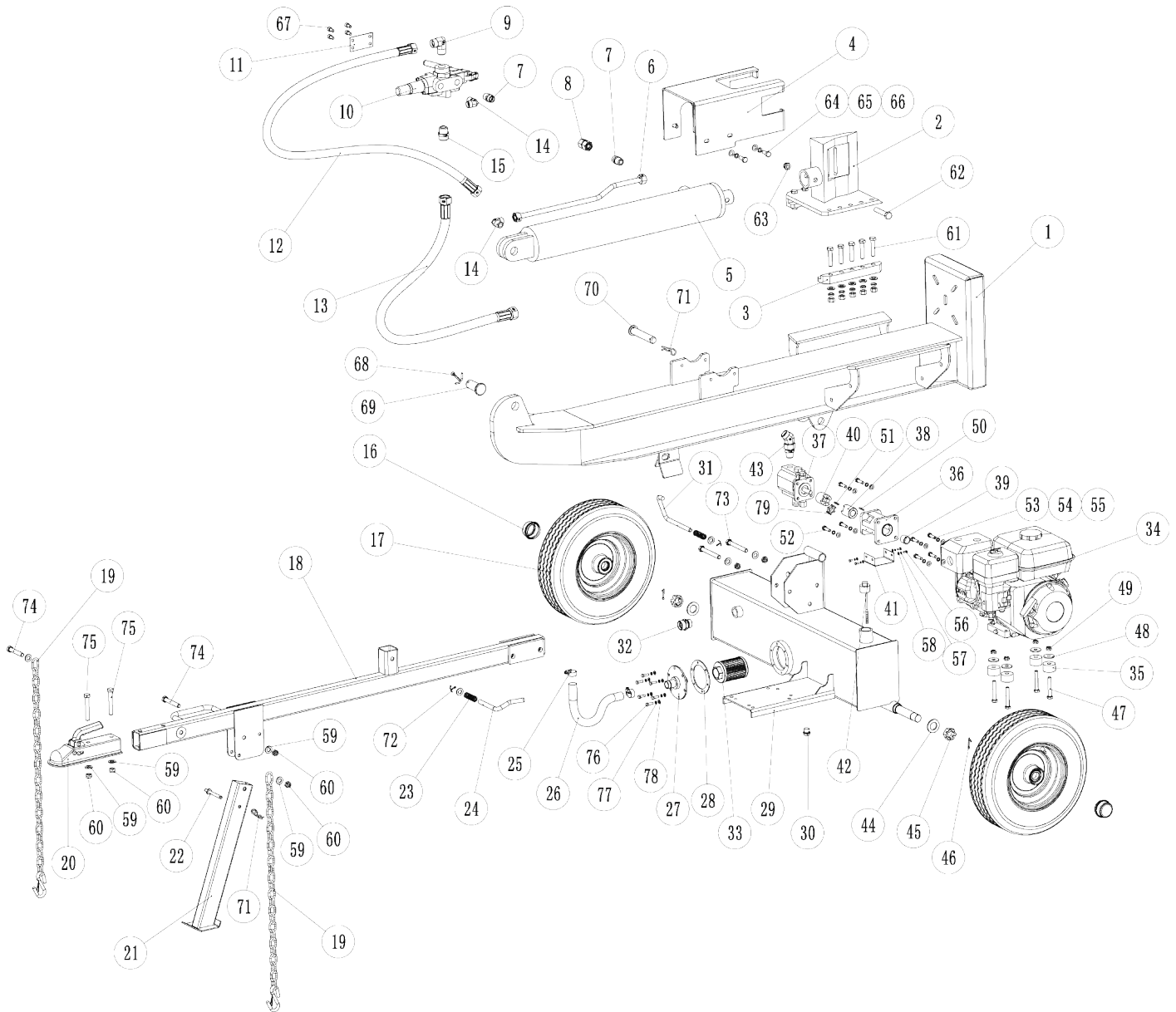


Le modèle peut différer légèrement de la photo / *The model may differ slightly from the picture*

PG25T

Fendeuse à bois *Log Splitter*

Parts Diagram PG25T



Spare parts for PG25T Hydraulic Log Splitter

| No. | Description | Qty |
|-----|------------------------------|-----|
| 1 | Beam | 1 |
| 2 | Wedge | 1 |
| 3 | Slide guide | 2 |
| 4 | Log stripper | 1 |
| 5 | Cylinder | 1 |
| 6 | Welded hose | 1 |
| 7 | Cylinder connector fitting | 2 |
| 8 | Transition joint fitting | 1 |
| 9 | 90° Joint fitting | 1 |
| 10 | Control valve | 1 |
| 11 | Control valve backplate | 1 |
| 12 | Hydraulic hose (Oil return) | 1 |
| 13 | Hydraulic hose (oil inlet) | 1 |
| 14 | 90° Joint fitting | 2 |
| 15 | Cylinder connector fitting | 1 |
| 16 | Bearing cover | 2 |
| 17 | 4.8-8 DOT Road tire | 2 |
| 18 | Tow bar | 1 |
| 19 | Safety chain | 2 |
| 20 | 2' Ball coupler hitch | 1 |
| 21 | Support leg | 1 |
| 22 | Safety pin | 1 |
| 23 | Spring | 2 |
| 24 | Safety pin | 1 |
| 25 | Hose clamp | 2 |
| 26 | Suction hose hyd. | 1 |
| 27 | Flange of filter | 1 |
| 28 | O-ring rubber washer | 1 |
| 29 | Hydraulic oil tank | 1 |
| 30 | Drain plug | 1 |
| 31 | Safety pin | 1 |
| 32 | Oil tank connector fitting | 1 |
| 33 | Return oil filter | 1 |
| 34 | Engine DJ168F | 1 |
| 35 | Engine shock pad | 4 |
| 36 | Pump bracket | 1 |
| 37 | Gear pump | 1 |
| 38 | Shaft coupling (engine side) | 1 |
| 39 | Engine axle sleeve | 1 |
| 40 | Shaft coupling (pump side) | 1 |
| 41 | Pump bracket back plate | 1 |
| 42 | Oil dipstick | 1 |
| 43 | 45° Joint | 1 |

| | | |
|----|--------------------------|----|
| 44 | Flat washer M24 | 2 |
| 45 | Hex slotted nut M24x1.5 | 2 |
| 46 | Split cotter 3.2x32 | 2 |
| 47 | Hex bolt M8x55 | 4 |
| 48 | Flat washer M8 | 4 |
| 49 | Lock nut M8 | 4 |
| 50 | Flat key - Engine | 1 |
| 51 | Flat key - Gear pump | 1 |
| 52 | Hex bolt M8x20 | 4 |
| 53 | Hex bolt M8x25 | 4 |
| 54 | Spring washer M8 | 12 |
| 55 | Flat washer M8 | 12 |
| 56 | Hex bolt M5x10 | 4 |
| 57 | Spring washer M5 | 4 |
| 58 | Flat washer M5 | 4 |
| 59 | Flat washer M12 | 14 |
| 60 | Lock nut M12 | 14 |
| 61 | Hex bolt M12x55 | 10 |
| 62 | Hex bolt M14x70 | 1 |
| 63 | Lock nut M14 | 1 |
| 64 | Hex bolt M10x25 | 4 |
| 65 | Spring washer M10 | 4 |
| 66 | Flat washer M10 | 4 |
| 67 | Hex socket screw M8x16 | 4 |
| 68 | Split cotter 6.3x63 | 1 |
| 69 | B-Pin 27x60 | 1 |
| 70 | B-Pin 22x120 | 1 |
| 71 | Lock pin 3.2 | 2 |
| 72 | Split cotter 3.2x25 | 2 |
| 73 | Hex bolt M12x100 | 2 |
| 74 | Hex bolt M12x70 | 2 |
| 75 | Hex bolt M12x80 | 2 |
| 76 | Hex bolt M6x20 | 6 |
| 77 | Spring washer M6 | 6 |
| 78 | Flat washer M6 | 6 |
| 79 | Flexible Insert (Spider) | 1 |