

DUCAR

161CC LAWNMOWER

DM50PL-A-DVO160



CAUTION

Before using our gasoline lawn mower, please read this manual carefully to understand the proper use of your unit. Keep this manual handy.

Original Instructions



Caution: Carefully read the manual before use.



Caution: Keep other people well away from the danger area.



Caution: Risk of hands and feet injuries.



Caution: Emission of toxic gas, do not use the mower in a closed or not well ventilated area.



Caution: hot surfaces.



Caution: Before carrying out any maintenance stop the engine and disconnect the spark plug cap.



Caution: Never fill the fuel tank while the engine is running.

Model	DM50PL-A-DVO160	Cutting heights	25-75mm with 5 grades
Drive type	Hand push	Catcher TYPE	Side discharging/Mulching
Engine type	DVO160	Catcher volume	/
Rated power	1.8 kw	Cutting width	508mm(20")
Rated speed	2800 rpm	Deck material	Steel
Displacement	161cc	Carton dimensions	740*588*410mm
Height adjustment	Centre adjustment		

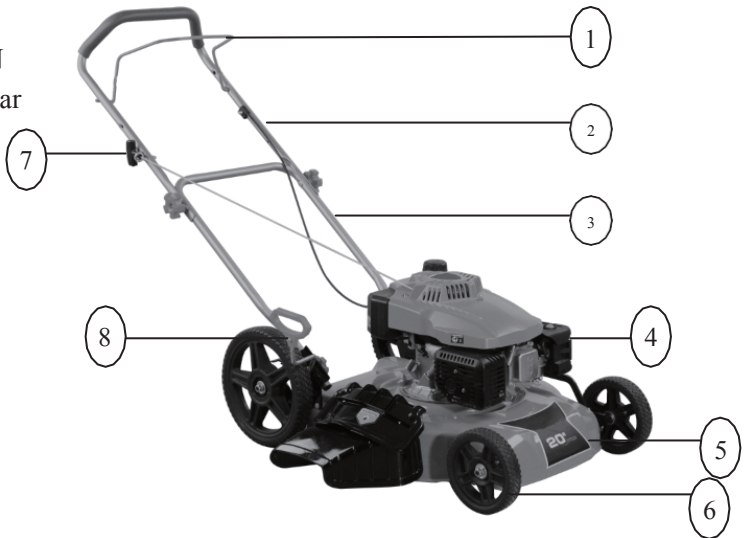
IMPORTANT: Read with care the security requirements included in the engine manual before the first use of the engine.

SUMMARY:

- 1.DESCRPTION
- 2.HANDLE ASSEMBLY
- 3.ADJUSTMENT OF CUTTING HEIGHT
- 4.SAFETY PRECAUTIONS
- 5.OPERATION
- 6.SAFETY RULES
- 7.MAINTENANCE
- 8.EXPLODING VIEW
- 9.GUARANTEE
10. CERTIFICATE OF CONFORMITY

1-DESCRIPTION

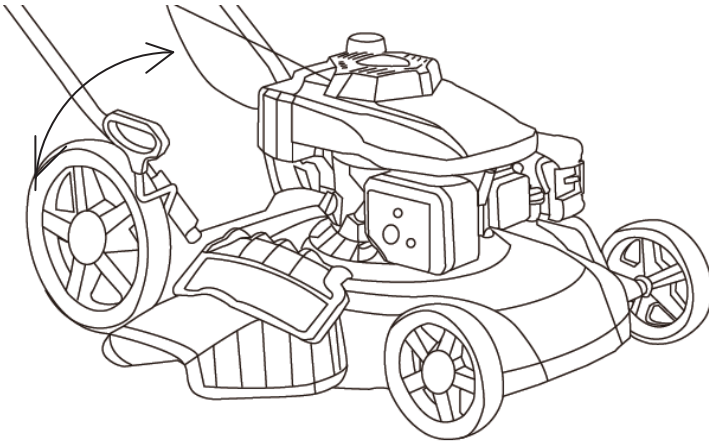
1. Engine control bar
2. Superior handle
3. Inferior handle
4. Engine
5. Carter
6. Wheel
- 7.Recoil Starter
8. Adjust handle



2-ASSEMBLY OF THE HANDLE

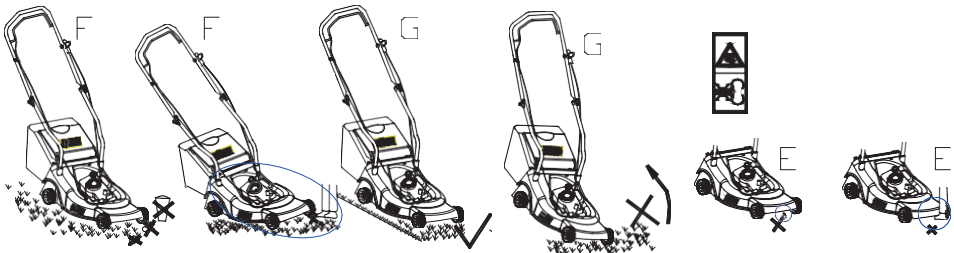
Open out the handle and screw the handles parts with the two screws and plastic nuts. Put the recoil starter on the right of the handle and fix the cable with the plastic collar. Introduce the rope of the recoil starter handle on its support guide rope. Adjust the traction cable : Make sure the lever is fully engage on the gearbox. Adjust the safety break cable : Make sure the engine stop right after you let go the handle. The cable should not be under any tension after the handle is release.

3-CUTTING HEIGHT AJUSTMENTS



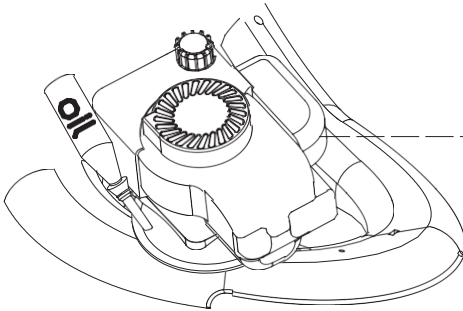
4-SAFETY PRECAUTIONS

- a) Always use the lawnmower with the grass catcher or/ and the deflector in position.
- b) Stop the engine before emptying the grass catcher or before you change the cutting height.
- c) While the engine is running, never introduce your hands or feet under the lawnmower or under the grass ejection area. fig E
- d) Before mowing, remove all foreign objects from the lawn, which maybe thrown by the machine. fig F
- e) Keep children and other people and domestic animals at a safe distance when the lawnmower is in use.
- f) Never lift the mower while starting the engine. fig G



5-OPERATION

Before using the machine you must read the Engine instruction book.



AIR FILTER

Engine delivered without oil: add 0.6liter of oil before starting the engine.

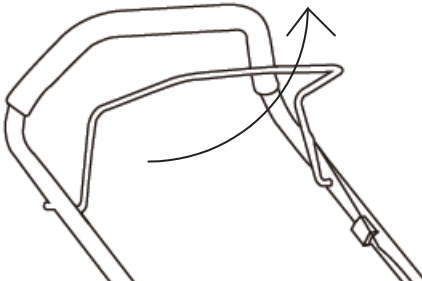
ENGINE STARTING:

Once the machine has been set up properly, start the engine as follow:

- a) Put the lever on the **START** position **I+I** .
- b) Take the flame out (N^o3) and maintain it against the superior handle, pull on the recoil starter handle until you can feel resistance and then pull harshly.
- c) Put the lever on **RUN** position **I+I** .



Blade is in action as soon as engine started. While the machine is working maintain the security handle (3) in working position. The engine will stop as soon as you release the engine control bar.



6.1 The regulation method of throttle control cable :

On the brake stand of flameout , there are switch of flameout , if the cable is elongates, make throttle control (3) against the superior handle , rocker of brake can't touch the switch of flameout , spark plug do not create spark , engine can't run. This time , you need regulate the cable.

The method is as follows

Method 1 :

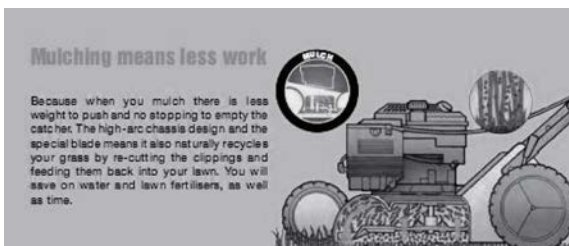
- 1) Dismantle throttle control , and Dismantle the top of cable , then use spanner Loosen the nut of regulate the screw ;
- 2) Revolve the regulate the screw to make the plastics set lengthen , then will avoid the length of cable that has lengthen out. ;
- 3) After regulation , fix the cable into the throttle control , (Simple method to put the throttle control into superior handle easy.) : put right end of the throttle control into the superior handle first, then put the other end of throttle control into the superior handle.) ◦
- 4) Tension the throttle control (3) to against the superior handle ,this time , the angle of rocker of brake to cover is 90° (or the distance of brake stand to rocker of brake is 1-2mm , otherwise , if it is no distance , the cable will break off. ;
- 5) Use spanner screw down the nut after regulation;
- 6) Contrarily , Repeat the method above ,as far as the spark plug create spark.

Method 2 :

remove the dipstick , and dismantle the end of cable , use tool to make a larger angle depend on pull the support of cable.

6.2 2 IN 1 FUNCTION (Mulching & Side discharge)

1. mulching mower or as



2. side-discharge mower.

What is mulching?

When mulching, the grass is cut in one working step, then finely chopped and returned to the grass Strip as natural fertilizer.

Hints for mulch-mowing:

- Regular cut-back by max.2 cm from 6 cm to 4 cm grass height
- Use a sharp cutting knife
- Do not mow wet grass
- Set max. motor speed
- Only move at walking pace
- Regularly clean mulching wedge, housing inner Side and mowing blade.

Starting operation

Retrofitting for mulching mower

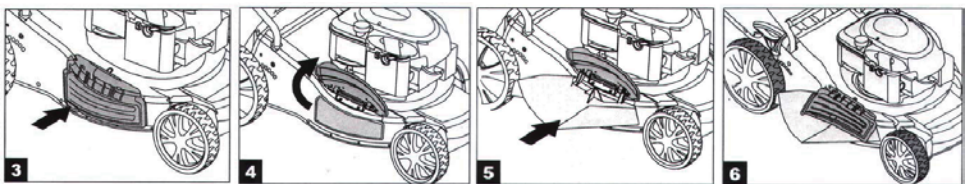
Note: Only with a stopped motor and standstill Cutter!

- Push the mulching wedge into the discharge channel. Lock the mulching wedge with housing—the nose on the bottom side of mulching wedge grip must snap into the opening on the housing.
- Lower the discharge flap again.

Resetting for side-discharge mowing

Note: Only when motor and cutter are at Standstill!

- Lift the discharge flap and remove the grass catch box
 - Mount the mulching wedge(see mulch Mowing).
 - Lift rear flap for side discharge(See below picture 3 and 4).
 - Mount the discharge channel for side discharge on the support pin of the rear flap.(See below picture 5)
 - Lower the rear flap—the rear flap lies on the Discharge channel.
- (See below picture 6)



7-SECURITY MEASURES

General conditions of use.

1. This machine is to be used exclusively for cutting natural grass. Never use the mower for other purposes. Any other utilization can involve danger for your safety and can involve damage to the mower.
2. Persons under 16 years of age and persons who are not familiar with the user instructions must not use the mower.
3. The user is responsible of the safety of other people in the working area. Keep children and domestic animals at a safe distance while the mower is in use.
4. Before mowing, remove all foreign object from the lawn which may be thrown by the machine, stay alert for any foreign objects which may have been missed.

USING INSTRUCTIONS

1. Check that all nuts, bolts and screws are well tightened.
2. Before mowing place the grass catcher in its position.
3. Before mowing make sure that the blade and the blade fixing screw are securely fastened. When cutting edges require resharpening, this must be done evenly on both sides so as to prevent any imbalance. If the blade is damaged, it must be replace.
4. When mowing always wear a long trousers and strong footwear.
5. Do not run the engine in an enclosed and/or poorly ventilated area, where gas of the engine contains carbon monoxide, which are dangerous for your health.
6. Work only when there is sufficient light.
7. Do not use the lawnmower when it is raining or when the grass is wet.
8. Particular precautions must be taken while mowing on slopes or downing stretches. Mow across the face of slopes, never down or up.
9. Turn off the engine if you must leave the lawnmower unattended, displace the lawnmower or incline it.
10. Never lift the rear of the mower while starting the engine and never place your hands and feet underneath the deck or into the rear discharge chute while the engine is running.
11. Never change in any way the rated speed of the engine.
12. On the self-propelled mowers, disconnect the self-propelled system before starting the engine.
13. Never lift or carry the mower while the engine is running.
14. Stop the engine and remove the spark plug cover in these cases:

- Stop the engine and remove the spark plug cover in these cases:
- Before any operation under the deck or the grass rear discharge chute.
- Before any maintenance, repairing or checking operations.
- Before carrying, lifting or removing the mower.
- If you leave the mower unattended or changing the cutting height.
- To remove and emptying the grass catcher.
- After hitting a foreign object, stop the engine and check thoroughly the mower in order to see if it is damaged. Bring the mower in a agreed service station to do the repairing if necessary.

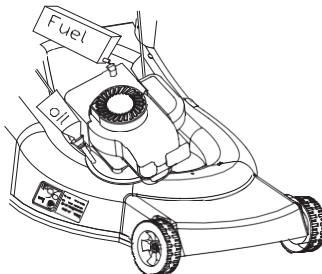
WARNING: After you stopped the engine the blade is still in motion during a few seconds.

- If the mower vibrates in an abnormal way, find the reasons why, and take your mower to an agreed service station.
- Check regularly that bolts, nuts and screws are regularly tightening for a safe use of the mower.

15. WARNING: GASOLINE IS HIGHLY INFLAMMABLE.

- Keep gasoline in a jerry can specially made for this purpose.
- Fill up the tank with a funnel, do the operation outside. Do not smoke. Do not use mobile phone.
- Fill up with gasoline and oil before starting the engine. Never open the cap of the fuel tank to add gasoline while the engine is running or still hot.
- Do not start the engine if there is some gasoline spread around, take the mower away from the one where gasoline has been spilled and avoid any contact from a hot source as long as the spilled gasoline is completely evaporated.
- Tighten the fuel tank cap and close tightly the jerry can cap.

Maintenance and storage



WARNING: Stop the engine and unplug the spark plug before any repairing or maintenance operations

- Make sure that all nuts, bolts and screws are kept well tightened to keep the lawnmower in a safe operating condition.
- Never store the lawnmower with a tank with gasoline in an enclosed area where gasoline fumes could reach a strong heat source or a flame. Allow the engine to cool down before you store your lawnmower in any storage place.
- In order to reduce any risk of fire, clean the lawnmower and in particularly the engine, the muffler, the fuel tank. Suppress all grass traces or leaves or excess of grease.
- Check frequently the condition of the deflector and the grass catcher, replace them if they are damaged.
- In case of drain oil of the tank before winter, do this operation outside.
- Wear thick gloves for the mounting and the sharpening of the blade. Be sure that the blade is always well balanced.

8-MAINTENANCE



WARNING: stop the engine and unplug the spark plug before any repairing or maintenance operations.

Stop the engine and unplug the spark plug before any repairing or maintenance operations.

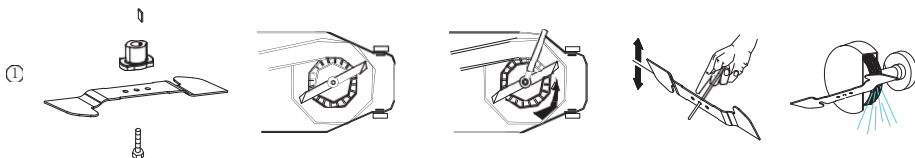
- For four strokes engine read carefully the maintenance engine manual. Check regularly the oil level and add some oil or replace it if necessary.
- Frequently check the lawnmower and ensure that all grass deposits are removed from beneath the deck.
- Lubricate regularly the wheel axle and the bearings with grease.
- Check often the blade, in order to obtain a clean work the blade should always be sharp and well balanced.
- At regular intervals check the tightening of all bolts and screws. Wear off or badly tightening nuts and bolts can involve some important damages to the engine or the frame.
- If the blade hits violently an obstacle, stop the lawnmower and bring it to an agreed service station.

THE BLADE: the blade is made of pressed steel, in order to obtain a clean work sharpen the blade frequently, around every 25 hours of work. Be sure that the blade is always well balanced, introduce a small iron axle ($\varnothing 2$ or $\varnothing 3$ mm) in the central hole of the blade, it should stay horizontal. If the blade does not stay horizontal balanced it by taking off some metal on the side, which is down.

YOU MUST ONLY USE THE MANUFACTURER BLADE IT SHOULD BE REFERENCED AND WEAR THE MANUFACTURER BRAND “Jieling”

To remove the blade, unscrew the screw, check the blade support and change all spare parts if they are worn out or damaged.

When reassembling the blade, make sure that the cutting edges face in the direction of the engine rotation. The blade screw must be torqued to 3.7 K·gm (37Nm) with a dynamometric tool.



ONLY USE ORIGINAL SPARE PARTS. SPARE PART OF BAD QUALITY CAN INVOLVE IMPORTANT DAMAGES TO YOUR LAWNMOWER AND BE PREJUDICIAL FOR YOUR SECURITY

9 · WARRANTY CONDITIONS:

This Petrol lawn mower has been designed for cutting lawn areas in private house and hobby gardens. (residential use only)

The manufacturer warrants the product 12 months from the date of purchasing, from all fabrication faults. The lawnmowers that are used in a professional or locative way are not warranty.

The warranty cannot be claimed in case of normal wear.

The manufacturer will replace at his expense the spare parts, which would be classified as defective by him or an agreed station service. In any case the manufacturer will not accept the reimbursement of the machine (partially or totally) and/or damages and interest direct or indirect.

The warranty does not cover:

- An insufficient maintenance
- An abnormal use or damage due to shocks
- The mounting, adjustment and preparation of the machine
- The spare parts with normal wear, security spare parts (belt, blade, blade support, bearings, cables, deflectors, spark plug, air filter etc...)
- Freight and packing cost

The manufacturer will refuse any responsibility if the machine was not used for the purpose it was made or if the operator did not use the machine as described in the operations and maintenance rules in the owner manual.

Read carefully the instruction manual before any use of the lawnmower.

For all spare parts order you must specify the reference of the mower the construction year, the serial number of the mower and of the engine.

DUCAR

MTI
CANADA