

DUCAR

Diagramme de pièces *Parts diagram*



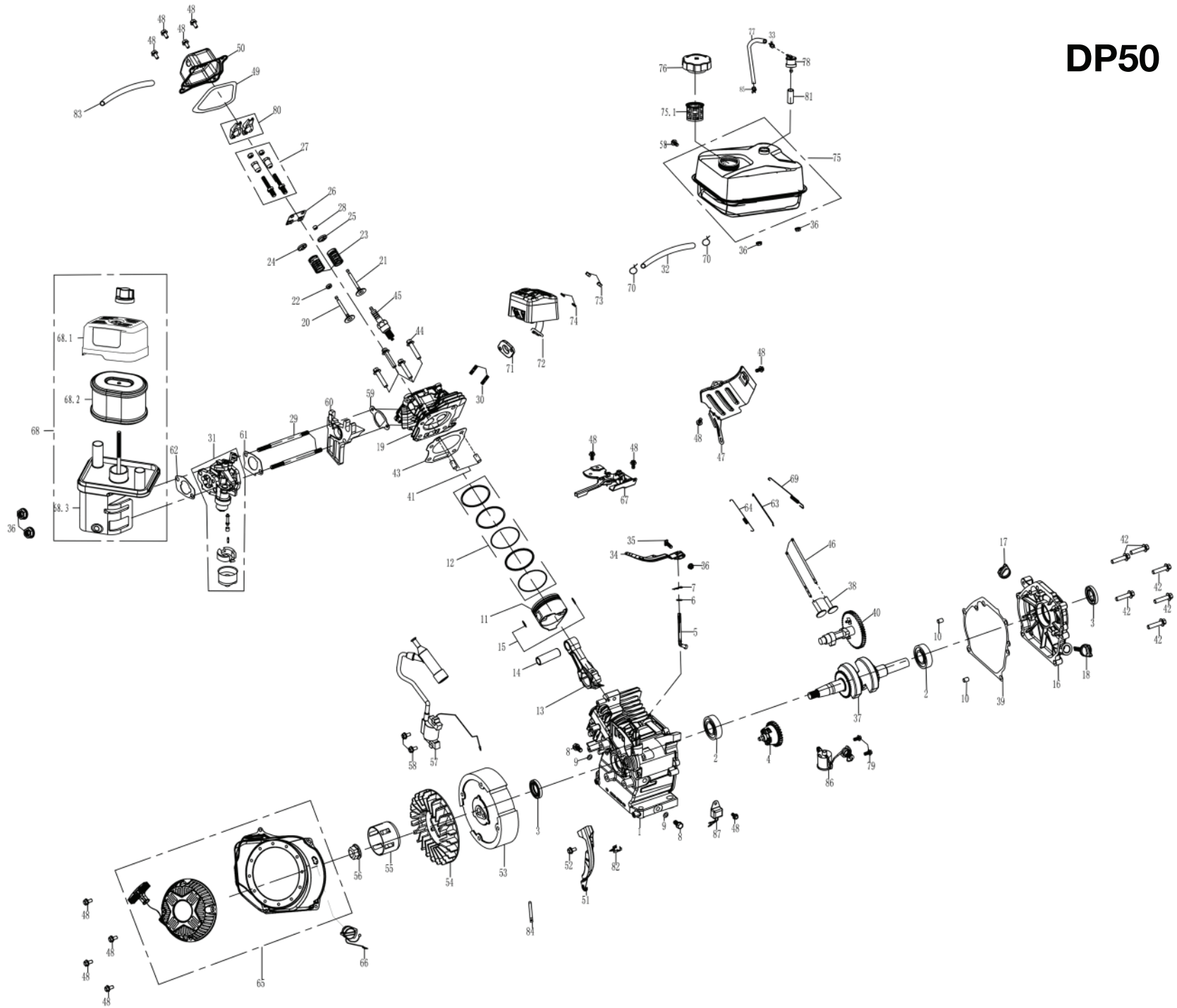
Le modèle peut différer légèrement de la photo / *The model may differ slightly from the picture*

DP50

Moteur

Engine

DP50



| Spare parts for the DP50 gasoline engine | | | |
|--|--------|------------------------------|----------|
| NO. | Code | Description | Quantity |
| 1 | 240210 | CRANKCASE | 1 |
| 2 | 93009 | BALL BEARING | 2 |
| 3 | 93507 | OIL SEAL | 2 |
| 4 | 244302 | GOVERNOR ASSEMBLY | 1 |
| 5 | 243901 | SHAFT,GOVERNOR ARM | 1 |
| 6 | 96804 | WASHER,GOVERNOR ARM SHAFT | 1 |
| 7 | 243902 | PIN,LOCK | 1 |
| 8 | 91816 | BOLT, DRAIN PLUG | 2 |
| 9 | 94007 | WASHER,DRAIN PLUG | 2 |
| 10 | 240901 | DOWEL PIN,CASECOVER | 2 |
| 11 | 241208 | PISTON | 1 |
| 12 | 241606 | SCRAPER RING SET ,PISTON | 1 |
| 13 | 241503 | ROD ASSEMBLY., CONNECTING | 1 |
| 14 | 245503 | PIN, PISTON | 1 |
| 15 | 241301 | CLIP, PISTON | 2 |
| 16 | 240104 | COVER ASSEMBLY, CRANKCASE | 1 |
| 17 | 241401 | OIL PLUG | 1 |
| 18 | 245601 | DIPSTICK | 1 |
| 19 | 241011 | CYLINDER HEAD | 1 |
| 20 | 241704 | VALVE,IN | 1 |
| 21 | 245904 | VALVE EXHAUST | 1 |
| 22 | 241806 | RETURNER,INTAKE VALVE | 1 |
| 23 | 246001 | SPRING,VALVE | 2 |
| 24 | 241801 | SEAT, VALVE SPRING,IN | 1 |
| 25 | 241802 | SEAT, VALVE SPRING,EX | 1 |
| 26 | 242202 | PLATE,PUSH ROD GUIDE | 1 |
| 27 | 91818 | ROCKER ARM TIGHTENINIG BOLTS | 2 |
| 28 | 241804 | ROTATOR | 1 |
| 29 | 91006 | BOLT, STUD | 2 |
| 30 | 91007 | BOLT, STUD | 2 |
| 31 | 242816 | CARBURETOR ASSEMBLY | 1 |
| 32 | 95405 | FUEL LINE | 1 |
| 33 | 94408 | CLIP,FUEL LINE | 1 |
| 34 | 244001 | GOVERNOR ARM | 1 |
| 35 | 91822 | BOLT,GOVERNOR ARM | 1 |
| 36 | 90016 | NUT M6 | 5 |
| 37 | 240346 | CRANKSHAFT ASSEMBLY | 1 |
| 38 | 246102 | LIFTER,VALVE | 2 |
| 39 | 96041 | PACKING,CASECOVER | 1 |
| 40 | 242003 | CAMSHAFT ASSEMBLY | 1 |
| 41 | 240905 | PIN, DOWEL | 2 |
| 42 | 91347 | BOLT M8X30 | 6 |
| 43 | 96058 | GASKET,CYLINDER HEAD | 1 |
| 44 | 91359 | BOLT M8X60 | 4 |
| 45 | 97108 | SPARK PULG | 1 |
| 46 | 241901 | ROD,PUSH | 2 |
| 47 | 240501 | SHROUD | 1 |
| 48 | 91325 | BOLT M6X12 | 13 |
| 49 | 96045 | PACKING,HEADCOVER | 1 |
| 50 | 241107 | COVER COMP,CYLINDER HEAD | 1 |
| 51 | 245702 | WIND SHIEL COMP. | 1 |
| 52 | 91330 | BOLT M6X20 | 1 |
| 53 | 240401 | FLYWHEEL ASSEMBLY | 1 |
| 54 | 244601 | FAN,RECOIL STARTER | 1 |

| Spare parts for the DP50 gasoline engine | | | |
|--|------------|----------------------------|----------|
| NO. | Code | Description | Quantity |
| 55 | 244502 | PULLEY,STARTER | 1 |
| 56 | 90003 | NUT | 1 |
| 57 | 97514 | IGNITION COIL ASSY | 1 |
| 58 | 91331 | BOLT M6X25 | 3 |
| 59 | 96047 | PACKING,INTAKE | 1 |
| 60 | 242301 | INSULATOR,CARBURETOR | 1 |
| 61 | 96051 | PACKING,CARBURETOR | 1 |
| 62 | 94226 | SPACER,CARBURETOR | 1 |
| 63 | 242701 | ROD,GOVERNOR | 1 |
| 64 | 244201 | SPRING,THROTTLE RETURN | 1 |
| 65 | 244740-026 | RECOIL STARTER ASSEMBLY | 1 |
| 66 | 245205 | SWITCH ASSEMBLY | 1 |
| 67 | 244403 | SHROUD ASSY,UPPER | 1 |
| 68 | 242937 | AIR CLEANER ASSEMBLY | 1 |
| 68,1 | 5208 | COVER, AIR CLEANER | 1 |
| 68,2 | 5209 | ELEMENT,AIR CLEANER | 1 |
| 68,3 | 5210 | BOTTOM COVER,AIR CLEANER | 1 |
| 69 | 244101 | SPRING,GOVERNOR | 1 |
| 70 | 94404 | CLIP,FUEL LINE | 2 |
| 71 | 96054 | PACKING,EXHAUST | 1 |
| 72 | 243737 | MUFFLER COMP | 1 |
| 73 | 90011 | NUT M8 | 2 |
| 74 | 94206 | SPRING WASHER | 2 |
| 75 | 243126-026 | FUEL TANK ASSEMBLY | 1 |
| 75,1 | 5121 | FUEL FILTER | 1 |
| 76 | 519201 | FUEL TANK CAP COMP | 1 |
| 77 | 95303 | CONNECTING PIPE | 1 |
| 78 | 245405 | MANUAL CHOKE ASSEMBLY | 1 |
| 79 | 91329 | BOLT M6X16 | 2 |
| 80 | 242101 | ROCKER ARM | 2 |
| 81 | 95903 | VENTILATION TUBE PROTECTOR | 1 |
| 82 | 240801 | CLIP | 1 |
| 83 | 95603 | TUBE,BREATHER | 1 |
| 84 | 599601 | CLIP,WIRE HARNESS | 1 |
| 85 | 94409 | CLIP,FUEL LINE | 1 |
| 86 | 245102 | SWITCH ASSEMBLY,OIL LEVEL | 1 |
| 87 | 245104 | AMPLIFIER | 1 |