

# DUCAR

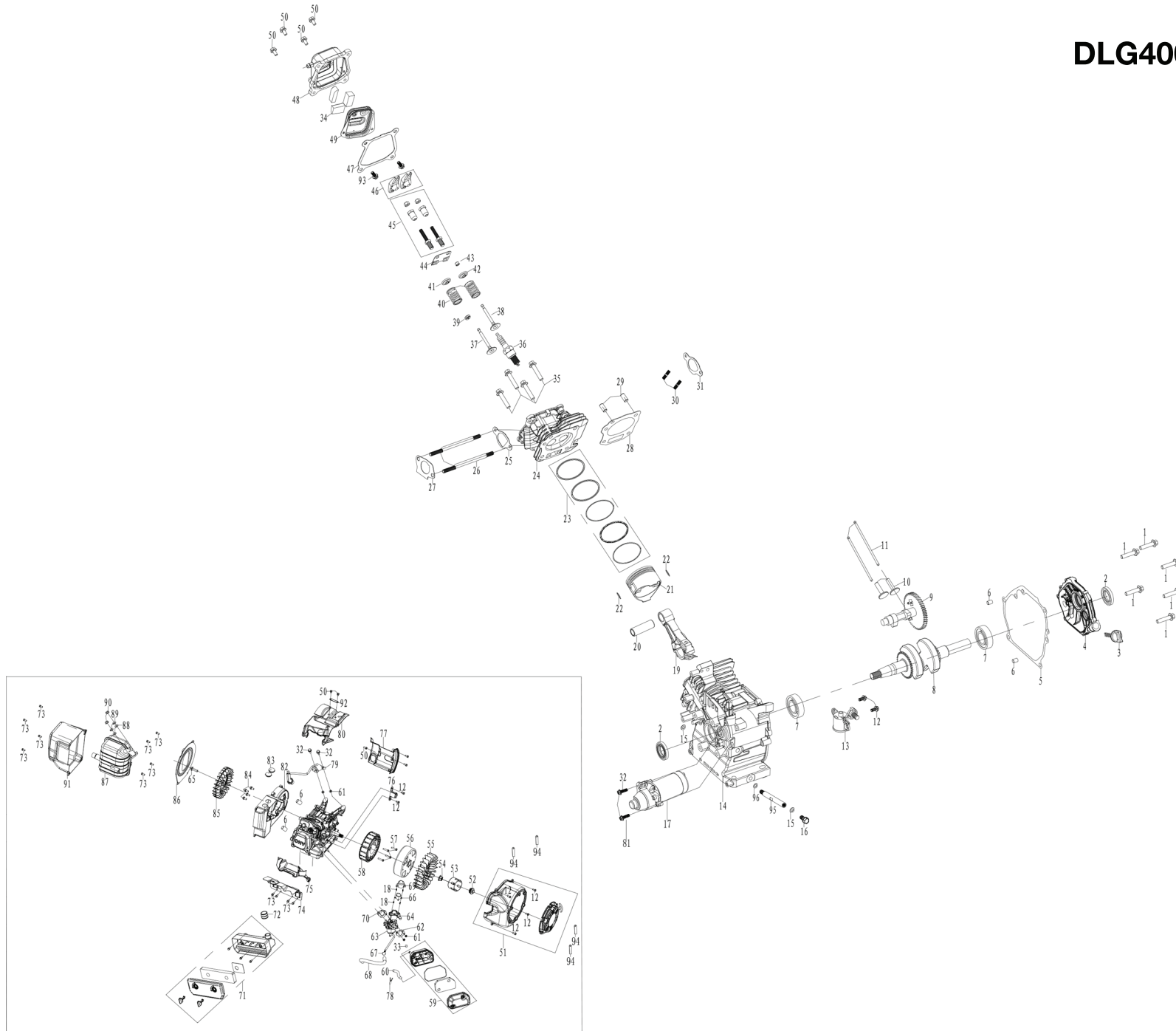
## Diagramme de pièces *Parts diagram*



Le modèle peut différer légèrement de la photo / *The model may differ slightly from the picture*

# DLG4000iSE dual fuel Moteur *Engine*

# DLG4000iSE



| Spare parts for the DLG4000iSE (DHLG225) gasoline engine |            |                                    |     |
|--|------------|------------------------------------|-----|
| NO.  | Code       | Description                        | Qty |
| 1  | 91347      | BOLT M8X30                         | 6   |
| 2  | 93507      | CRANKCASE OIL SEAL                 | 2   |
| 3  | 245601-313 | DIPSTICK ASSEMBLY                  | 1   |
| 4  | 330101     | CRANKCASE COVER                    | 1   |
| 5  | 96293      | CRANKCASE SEAL WASHER              | 1   |
| 6  | 240904     | CRANKCASE LOCATING PIN             | 4   |
| 7  | 93010      | AXLE BEARING                       | 2   |
| 8  | 240364     | CRANKSHAFT ASSEMBLY                | 1   |
| 9  | 332003     | CAMSHAFT ASSEMBLY                  | 1   |
| 10   | 246103     | VALVE LIFTER                       | 2   |
| 11   | 241901     | PUSH ROD                           | 2   |
| 12   | 91329      | BOLT M6X16                         | 8   |
| 13   | 245113     | OIL SENSOR ASSEMBLY                | 1   |
| 14   | 330208     | CRANKCASE                          | 1   |
| 15   | 94007      | OIL DRAIN BOLT WASHER              | 2   |
| 16   | 91816      | OIL DRAIN BOLT                     | 1   |
| 17   | 97431      | STARTING MOTOR ASSEMBLY            | 1   |
| 18   | 92217      | SCREW M4*8                         | 4   |
| 19   | 331500     | CONNECTING ROD ASSEMBLY            | 1   |
| 20   | 245503     | PISTON PIN                         | 1   |
| 21   | 241211     | PISTON                             | 1   |
| 22   | 241301     | PISTON PIN RING                    | 2   |
| 23   | 241607     | PISTON RING ASSEMBLY               | 1   |
| 24   | 331001     | CYLINDER HEAD                      | 1   |
| 25   | 96182      | AIR INTAKE GASKET                  | 1   |
| 26   | 91029      | AIR INLET STUD STUD BOLT           | 2   |
| 27   | 96051      | CARBURETOR GASKET                  | 1   |
| 28   | 96058      | CYLINDER HEAD GASKET               | 1   |
| 29   | 240905     | CYLINDER HEAD LOCATING PIN         | 2   |
| 30   | 91007      | AIR EXHAUST STUD STUD BOLT         | 2   |
| 31   | 96055      | EXHAUST SEAL WASHER                | 1   |
| 32   | 91333      | BOLT M6*28                         | 3   |
| 33   | 249919     | PLUG                               | 1   |
| 34   | 339915     | POLYURETHANE SCREEN                | 3   |
| 35   | 91359      | BOLT M8X60                         | 4   |
| 36   | 97109      | SPARK PLUG                         | 1   |
| 37   | 241704     | INTAKE VALVE                       | 1   |
| 38   | 245904     | EXHAUST VALVE                      | 1   |
| 39   | 241806     | AIR INLET SPRING LOWER SEAT        | 1   |
| 40   | 246001     | VALVE SPRING                       | 2   |
| 41   | 241801     | INTAKE VALVE SPRING SEAT           | 1   |
| 42   | 241802     | AIR INLET SPRING SEAT              | 1   |
| 43   | 241804     | TOP CAP                            | 1   |
| 44   | 242202     | VALVE RETAINER ASSEMBLY            | 1   |
| 45   | 91818      | ROCKING ARM TIGHTENING BOLT        | 2   |
| 46   | 242101     | ROCKING ARM                        | 2   |
| 47   | 96200      | HEADCOVER SEAL WASHER              | 1   |
| 48   | 241115     | CYLINDER HEAD COVER                | 1   |
| 49   | 241116     | INNER COVER OF CYLINDER HEAD COVER | 1   |

|    |        |                             |    |
|----|--------|-----------------------------|----|
| 50 | 91325  | BOLT M6X12                  | 9  |
| 51 | 330501 | STARTER ASSEMBLY            | 1  |
| 52 | 91864  | BOLT                        | 1  |
| 53 | 334501 | STARTER PULLY               | 1  |
| 54 | 90003  | NUT M14                     | 1  |
| 55 | 334601 | IMPELLER                    | 1  |
| 56 | 500191 | ROTOR                       | 1  |
| 57 | 91400  | BOLT M6X60                  | 4  |
| 58 | 503726 | STATOR                      | 1  |
| 59 | 337001 | RESONANT CAVITY ASSEMBLY    | 1  |
| 60 | 95602  | BLAST PIPE                  | 1  |
| 61 | 90016  | NUT M6                      | 4  |
| 62 | 94229  | SPACER,CARBURETOR           | 1  |
| 63 | 332825 | CARBURETOR ASSEMBLY         | 1  |
| 64 | 249915 | STEP MOTOR SEAT             | 1  |
| 65 | 91419  | BOLT M8*1*25                | 1  |
| 66 | 249949 | STEPPER MOTOR               | 1  |
| 67 | 599302 | LOW PRESSURE HOSE HOOP      | 1  |
| 68 | 517906 | LOW PRESSURE HOSE           | 1  |
| 69 | 249916 | SHIELDING                   | 1  |
| 70 | 332301 | CARBURETOR CONNECTION BLOCK | 1  |
| 71 | 332901 | AIR CLEANER ASSEMBLY        | 1  |
| 72 | 95918  | CONNECTING PIPE             | 1  |
| 73 | 91330  | BOLT M6X20                  | 12 |
| 74 | 249917 | BRACKET                     | 1  |
| 75 | 240511 | SHIELD                      | 1  |
| 76 | 503697 | TRIGGER                     | 1  |
| 77 | 330503 | WIND-LEAD-COVER             | 1  |
| 78 | 94407  | CLIP,FUEL LINE              | 1  |
| 79 | 339909 | IGNITION                    | 1  |
| 80 | 330502 | UPPER WIND-LEAD-COVER       | 1  |
| 81 | 91334  | BOLT M6X30                  | 1  |
| 82 | 244306 | CENTRIFUGAL FAN HOUSING.    | 1  |
| 83 | 244304 | CENTRIFUGAL HOOD PLUG       | 2  |
| 84 | 91343  | BOLT M8*16                  | 4  |
| 85 | 244606 | IMPELLER                    | 1  |
| 86 | 334302 | CENTRIFUGAL FAN COVER       | 1  |
| 87 | 243740 | MUFFLER ASSEMBLY            | 1  |
| 88 | 94216  | SPARK ARRESTER              | 2  |
| 89 | 94206  | SPRING WASHER               | 2  |
| 90 | 90011  | NUT M8                      | 2  |
| 91 | 500057 | MUFFLER COVER               | 1  |
| 92 | 249914 | WIRE CLIP                   | 1  |
| 93 | 91322  | BOLT M5*12                  | 2  |
| 94 | 599601 | METAL CLAMP                 | 4  |
| 95 | 91831  | OIL DRAIN SOLENOID          | 1  |
| 96 | 94035  | OIL DRAIN BOLT WASHER       | 1  |