

# DUCAR

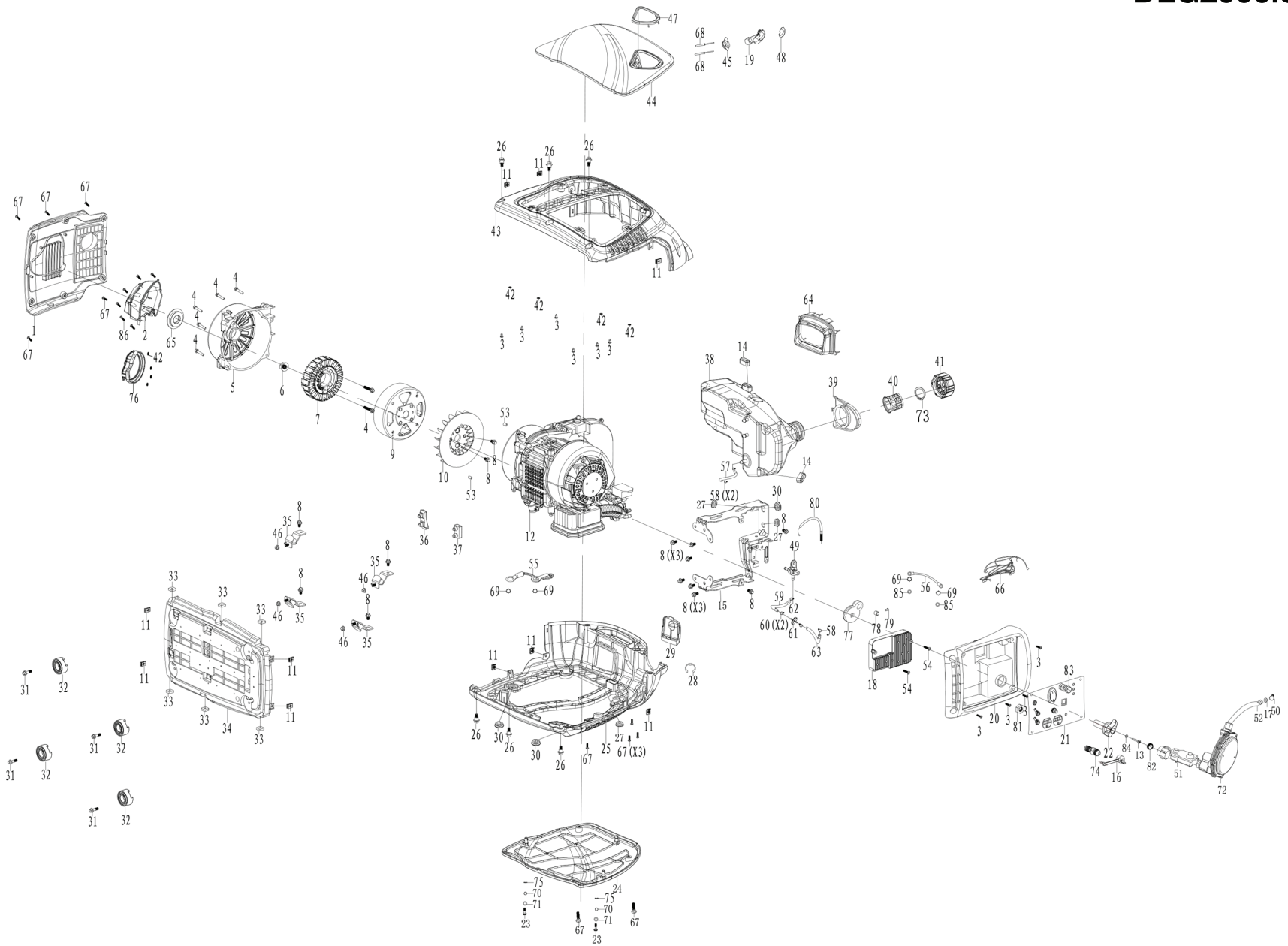
## Diagramme de pièces *Parts diagram*



Le modèle peut différer légèrement de la photo / *The model may differ slightly from the picture*

## **DLG2000iS dual fuel** **Génératrice propane et essence** *Propane and gasoline generator*

# DLG2000iS



| Spare parts for the DLG2000iS inverter dual fuel generator |              |  |     |
|--|--------------|--|-----|
| NO.  | Code         | Description                            | Qty |
| 1  | 500384       | MUFFLER BAFFLE                         | 1   |
| 2  | 202501       | SHIELD, MUFFLER 1                      | 1   |
| 3  | 92014        | CROSS RECESSED PAN HEAD BOLTS ST4.2X13 | 10  |
| 4  | 91334        | BOLT M6X30                             | 7   |
| 5  | 500036       | MOTOR FIXED HOOD                       | 1   |
| 6  | 90014        | NUT M12                                | 1   |
| 7  | 752010       | SHAKE HANDSHANDLE COVER                | 1   |
| 8  | 91325        | REEL BOLT M6X12                        | 14  |
| 9  | 752008       | ROTATOR                                | 1   |
| 10   | 500037       | THE MOTOR FAN                          | 1   |
| 11   | 500045       | LOCK CLAMP M5                          | 10  |
| 12   | 110008010053 | ENGINE ASSY DHLG80                     | 1   |
| 13   | 92032        | THE TROUGH PAN HEAD SCREWS M4X16       | 1   |
| 14   | 500009       | VIBRATION ISOLATION PAD C              | 2   |
| 15   | 500231       | INVERTER STENTS                        | 1   |
| 16   | 500232       | AIR INTAKE PLUG                        | 1   |
| 17   | 96120        | THE PAPER GASKET                       | 1   |
| 18   | 500360       | INVERTER                               | 1   |
| 19   | 500018       | SHAKE HANDSHANDLE                      | 1   |
| 20   | 500238       | PANEL BACK COVER                       | 1   |
| 21   | 500728       | PANEL COMP                             | 1   |
| 22   | 500230       | A KNOB                                 | 1   |
| 23   | 92012        | STOP BOLT M5X18                        | 2   |
| 24   | 500025-026   | THE LEFT PANEL                         | 1   |
| 25   | 500028-026   | THE LEFT FRAME                         | 1   |
| 26   | 92003        | HEX FLANG BOLTS M6X20                  | 6   |
| 27   | 500008       | VIBRATION ISOLATION PAD B              | 3   |
| 28   | 500027       | STOP                                   | 1   |
| 29   | 500031-026   | THE GATES                              | 1   |
| 30   | 500007       | VIBRATION ISOLATION PAD A              | 3   |
| 31   | 91330        | REEL BOLT M6X20                        | 4   |
| 32   | 500034       | CHASSIS SUSPENSION RUBBER PAD          | 4   |
| 33   | 90027        | SQUARE NUT M6                          | 6   |
| 34   | 500002       | FLOOR                                  | 1   |
| 35   | 500317       | DAMPING BEARING                        | 4   |
| 36   | 500040       | MOTOR VIBRATION DAMPING PAD            | 1   |
| 37   | 500035       | ENGINE VIBRATION DAMPING PADS          | 1   |
| 38   | 700210L      | THE FUEL TANK ASSEMBLY                 | 1   |
| 39   | 500032       | OIL DRAIN                              | 1   |
| 40   | 500010       | SCREEN                                 | 1   |
| 41   | 500005       | THE CAP                                | 1   |
| 42   | 99519        | FLAT WASHER                            | 8   |
| 43   | 500029-026   | THE RIGHT FRAME                        | 1   |
| 44   | 500041-026   | THE RIGHT PANEL                        | 1   |
| 45   | 500019       | PULL ON THE ROPE GUIDE PLATE           | 1   |
| 46   | 90016        | NUT M6                                 | 4   |
| 47   | 500030       | HANDLE DECORATED                       | 1   |
| 48   | 500017       | COVER,STARTER GRIP                     | 1   |
| 49   | 503062       | FUEL SWITCH                            | 1   |
| 50   | 599302       | LOW PRESSURE PIPE HOOP                 | 1   |
| 51   | 545332       | PRESSURE REDUCING VALVE                | 1   |

|    |          |  |    |
|----|----------|--|----|
| 52 | 517907   | LOW PRESSURE PIPE 800 MM                                 | 1  |
| 53 | 240904   | DOWEL PIN,CASECOVER                                      | 2  |
| 54 | 92013    | CROSS RECESSED PAN HEAD SCREW + GASKET COMBINATION M5X35 | 2  |
| 55 | 500044   | GROUNDING WIRE   | 1  |
| 56 | 500026   | EARTH WIRE   | 1  |
| 57 | 95431L   | FUEL HOSE  | 1  |
| 58 | 94411    | CLIP,FUEL LINE $\Phi$ 11X0.8                             | 3  |
| 59 | 95430L   | FUEL HOSE $\Phi$ 7 $\times$ $\Phi$ 5 $\times$ 40MM       | 1  |
| 60 | 94410    | CLIP,FUEL LINE $\Phi$ 9X0.8                              | 2  |
| 61 | 503077   | THE FILTER   | 1  |
| 62 | 94408    | CLIP,FUEL LINE $\Phi$ 10                                 | 1  |
| 63 | 95470L   | FUEL LINE  | 1  |
| 64 | 202601   | MUFFLER COVER SEAL RUBBER                                | 1  |
| 65 | 500039   | INLET COVER  | 1  |
| 66 | 500229   | DEPUTY WIRING HARNESS                                    | 1  |
| 67 | 91825    | CROSS RECESSED PAN HEAD SCREW + GASKET COMBINATION M5X12 | 10 |
| 68 | 92001    | OPEN TYPE OVAL HEAD BLIND RIVETS $\Phi$ 3X15             | 2  |
| 69 | 94003    | TOOTH TYPE GASKET $\Phi$ 6                               | 4  |
| 70 | 94204    | SPLIT LOCK WASHER $\Phi$ 5                               | 2  |
| 71 | 94219    | FLAT WASHER $\Phi$ 5                                     | 2  |
| 72 | 50280008 | PRESSURE REDUCING VALVE                                  | 1  |
| 73 | 94006    | OPEN RING  | 1  |
| 74 | 500228   | AIR INTAKE CONNECTORS                                    | 1  |
| 75 | 94018    | OPEN RING  | 2  |
| 76 | 500038   | MOTOR FAN COWL   | 1  |
| 77 | 500285   | THE ARMS   | 1  |
| 78 | 500286   | STAY PIN   | 1  |
| 79 | 92005    | CROSS SCREW M4*12  | 1  |
| 80 | 500288   | LASSO  | 1  |
| 81 | 90067    | HEXAGONAL THIN NUT M14X1.5                               | 1  |
| 82 | 500068   | CHOKE PLUG   | 1  |
| 83 | 500237   | PULL   | 1  |
| 84 | 94218    | FLAT WASHER $\Phi$ 4                                     | 1  |
| 85 | 94217    | FLAT WASHER $\Phi$ 3.2                                   | 2  |
| 86 | 92108    | SCREW ST4. 8x16  | 6  |