

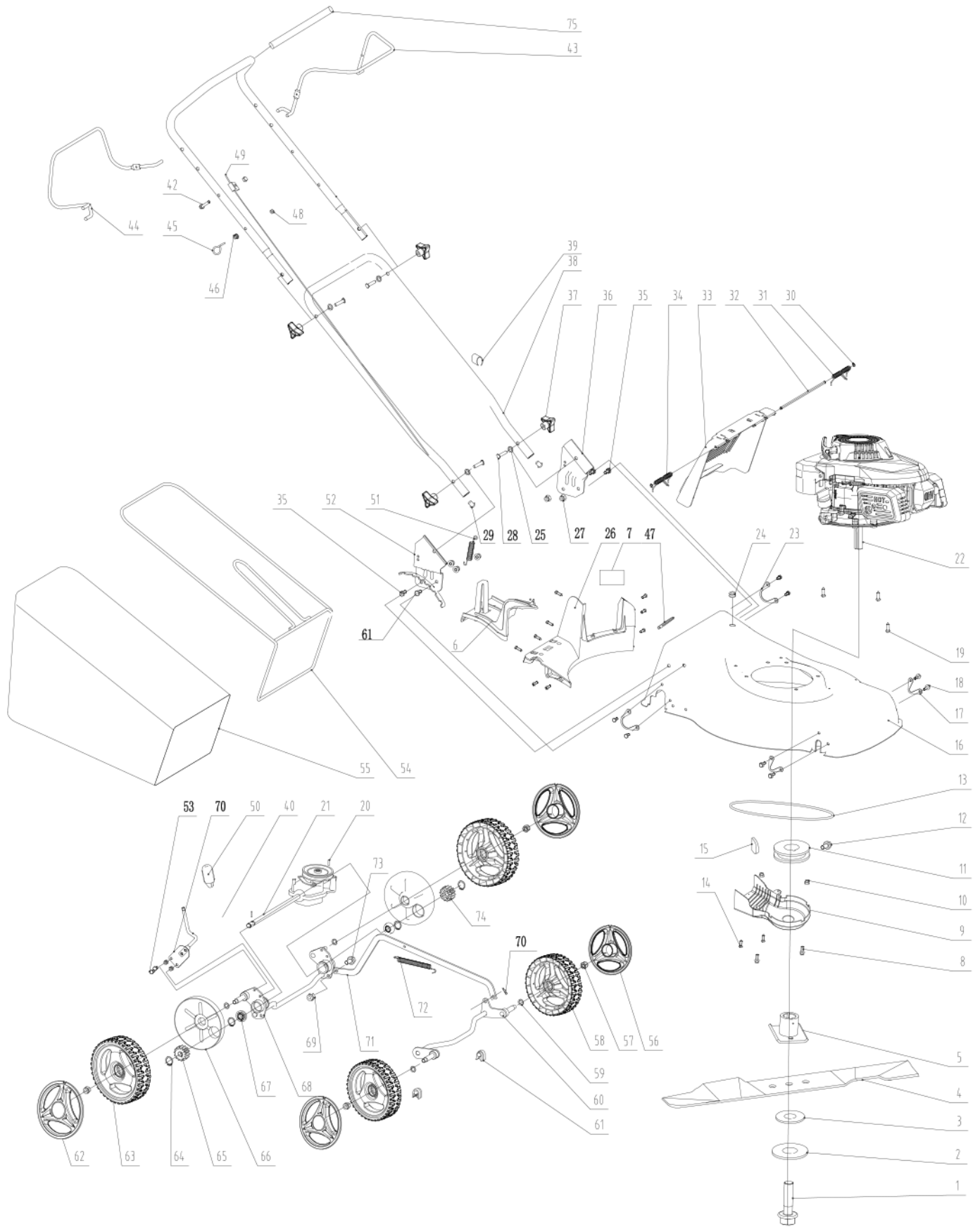
DUCAR

Equipment parts manual

Model : DUEDM41S
Lawn mower



Picture may not reflect the exact model



| No. | Part number | Description | Qty |
|------------|--------------------|-------------------------------|------------|
| 1 | DUP91221 | BOLT 3/8-24UNFX38 | 1 |
| 2 | DUP94042 | FLAT WASHER | 1 |
| 3 | DUP602001 | BLADE WASHER | 1 |
| 4 | DUP602005 | BLADE | 1 |
| 5 | DUP602057 | BLADE ADAPTER | 1 |
| 6 | DUP601047 | MULCHING PLUG | 1 |
| 7 | DUP601150 | DIAL THE GRASS PLATE | 1 |
| 8 | DUP91304 | BOLT M6X16 | 2 |
| 9 | DUP606108 | BELT COVER | 1 |
| 10 | DUP90060 | NUT M6 | 2 |
| 11 | DUP606011 | INITIATIVE PULLEY | 1 |
| 12 | DUP91405 | BOLT M6X7 | 1 |
| 13 | DUP606054 | BELT V GB11544 | 1 |
| 14 | DUP92139 | SCREW KAL50X12 | 11 |
| 15 | DUP296501 | KEY | 1 |
| 16 | DUP601149-175 | DECK | 1 |
| 17 | DUP606338 | FRONT AXLE PLANK | 2 |
| 18 | DUP92149 | SCREWS M6X12 | 8 |
| 19 | DUP92150 | SCREW | 3 |
| 20 | DUP606300 | TRANSMISSION GEAR PIN GB119.2 | 2 |
| 21 | DUP606082 | GEAR BOX | 1 |
| 22 | DUP220016010014 | ENGINE | 1 |
| 23 | DUP606340 | REAR AXLE PLANK | 2 |
| 24 | DUP601005 | CABLE PROTECTING BUSH | 1 |
| 25 | DUP94041 | WASHER | 4 |
| 26 | DUP604038 | BACK PANEL | 1 |
| 27 | DUP90059 | NUT M8 | 5 |
| 28 | DUP91868 | BOLT | 4 |
| 29 | DUP605006 | STEM | 2 |
| 30 | DUP94036 | CIRCLIP | 2 |
| 31 | DUP604016 | TORSIONAL SPRING (L) | 1 |
| 32 | DUP604017 | AXLE(REAR COVER) | 1 |
| 33 | DUP604018 | REAR COVER | 1 |
| 34 | DUP604045 | TORSIONAL SPRING (R) | 1 |
| 35 | DUP92151 | BOLT M8X20 | 3 |
| 36 | DUP601220 | LEFT HANDLE SUPPORT | 1 |
| 37 | DUP605098-175 | TRIANGLE KNOB | 4 |
| 38 | DUP605016-010 | LOWER HANDLE | 1 |
| 39 | DUP605377 | CLIP | 1 |
| 40 | DUP603136 | HEIGHT ADJUSTER LEVEL | 1 |
| 41 | DUP605008-010 | UPPER HANDLE | 1 |
| 42 | DUP91870 | BOLT | 1 |
| 43 | DUP605010-175 | BRAKE LEVEL | 1 |
| 44 | DUP605015-175 | DRIVER LEVEL | 1 |
| 45 | DUP605009 | ROPE GUIDE SUPPORT | 1 |

| No. | Part number | Description | Qty |
|------------|--------------------|----------------------------|------------|
| 46 | DUP90016 | BOLT M6 | 1 |
| 47 | DUP599601 | CLIP,WIRE HARNESS | 1 |
| 48 | DUP90061 | NUT M6 | 2 |
| 49 | DUP605057 | BRAKE CABLE | 1 |
| 50 | DUP603003-175 | HEIGHT ADJUSTER COVER | 1 |
| 51 | DUP606438 | RETURN SPRING | 1 |
| 52 | DUP601222 | RIGHT HANDLE SUPPORT | 1 |
| 53 | DUP91404 | BOLT M6X14 | 2 |
| 54 | DUP604020-010 | FRAME | 1 |
| 55 | DUP604019-002 | GRASS BAG | 1 |
| 56 | DUP606474-198 | WHEEL COVER | 2 |
| 57 | DUP90057 | NUT GB6182 M10 | 4 |
| 58 | DUP606140 | FRONT WHEEL | 2 |
| 59 | DUP92341 | FLAT WASHER | 4 |
| 60 | DUP606433 | FRONT AXLE | 1 |
| 61 | DUP92215 | BOLT M8X30 | 1 |
| 62 | DUP606480-198 | WHEEL COVER | 2 |
| 63 | DUP606142 | REAR WHEEL | 2 |
| 64 | DUP94049 | CIRCLIP | 4 |
| 65 | DUP606299 | RIGHT GEAR ASSY | 1 |
| 66 | DUP606008 | INNER WHEEL COVER | 2 |
| 67 | DUP606010 | BALL BEARING | 2 |
| 68 | DUP606053 | REAR AXLE | 1 |
| 69 | DUP90058 | NUT GB6182 M6 | 6 |
| 70 | DUP243902 | RECOIL CLAMP | 1 |
| 71 | DUP603024 | HEIGHT ADJUSTMENT LINK BAR | 1 |
| 72 | DUP603062 | HEIGHT ADJUSTER SPRING | 1 |
| 73 | DUP92224 | FIXED BOLT | 1 |
| 74 | DUP606298 | LEFT GEAR ASSY | 1 |
| 75 | DUP605149 | SOFT GRIP | 1 |