

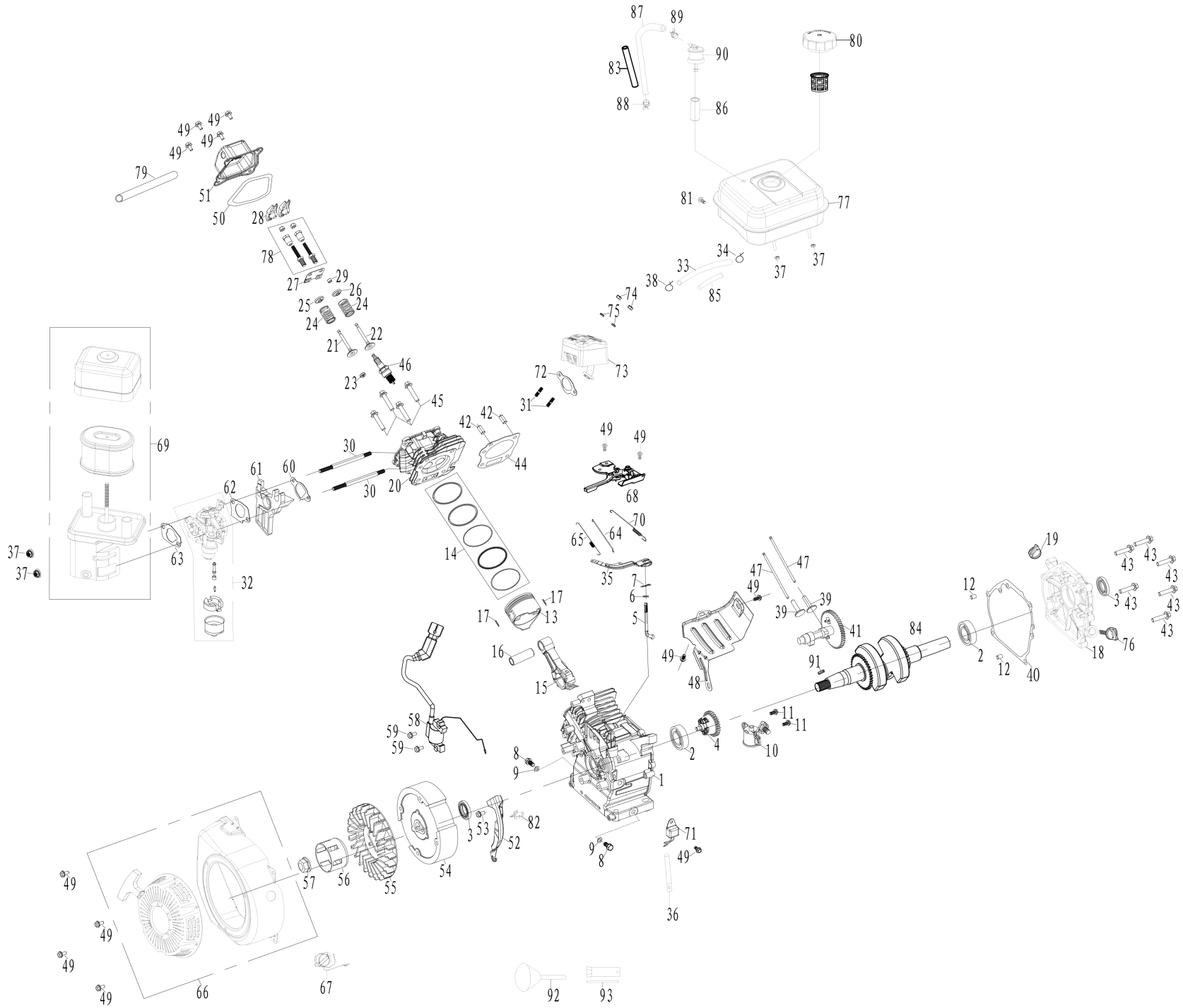
DUCAR

Engine parts manual

**Model : DUELS25T
25 Ton log splitter**



Picture may not reflect the exact model



| No. | Part number | Description | Qty |
|-----|---------------|---------------------------|-----|
| 1 | DUP240210 | CRANKSHAFT | 1 |
| 2 | DUP93009 | BALL BEARING | 2 |
| 3 | DUP93507 | OIL SEAL | 2 |
| 4 | DUP244302 | GOVERNOR ASSEMBLY | 1 |
| 5 | DUP243901 | SHAFT,GOVERNOR ARM | 1 |
| 6 | DUP96804 | WASHER,GOVERNOR ARM SHAFT | 1 |
| 7 | DUP243902 | PIN,LOCK | 1 |
| 8 | DUP91816 | BOLT, DRAIN PLUG | 2 |
| 9 | DUP94007 | WASHER,DRAIN PLUG | 2 |
| 10 | DUP245102 | SWITCH ASSEMBLY,OIL LEVEL | 1 |
| 11 | DUP91329 | BOLT M6X16 | 2 |
| 12 | DUP240901 | DOWEL PIN,CASECOVER | 2 |
| 13 | DUP241208 | PISTON | 1 |
| 14 | DUP241606 | PISTON RING SET | 1 |
| 15 | DUP241503 | ROD ASSEMBLY., CONNECTING | 1 |
| 16 | DUP245503 | PIN, PISTON | 1 |
| 17 | DUP241301 | CLIP, PISTON | 2 |
| 18 | DUP240104 | COVER ASSEMBLY, CRANKCASE | 1 |
| 19 | DUP241401-313 | OIL PLUG | 1 |
| 20 | DUP241011 | CYLINDER HEAD | 1 |
| 21 | DUP241704 | VALVE,IN | 1 |
| 22 | DUP245904 | VALVE EXHAUST | 1 |
| 23 | DUP241806 | RETURNER,INTAKE VALVE | 1 |
| 24 | DUP246001 | SPRING,VALVE | 2 |
| 25 | DUP241801 | SEAT, VALVE SPRING,IN | 1 |
| 26 | DUP241802 | SEAT, VALVE SPRING,EX | 1 |
| 27 | DUP242202 | PLATE,PUSH ROD GUIDE | 1 |
| 28 | DUP242101 | ROCKER ASSY | 2 |
| 29 | DUP241804 | ROTATOR | 1 |
| 30 | DUP91006 | BOLT, STUD | 2 |
| 31 | DUP91007 | BOLT, STUD | 2 |
| 32 | DUP242816 | CARBURETOR COMPONENTS | 1 |
| 33 | DUP96945 | FUEL LINE | 1 |
| 34 | DUP94403 | CLIP,FUEL LINE | 1 |
| 35 | DUP244001 | GOVERNOR ARM | 1 |
| 36 | DUP599601 | METAL CLIP | 1 |
| 37 | DUP90016 | NUT M6 | 4 |
| 38 | DUP94404 | CLIP,FUEL LINE | 1 |
| 39 | DUP246102 | LIFTER,VALVE | 2 |
| 40 | DUP96042 | PACKING,CASECOVER | 1 |
| 41 | DUP242002 | CAMSHAFT ASSEMBLY | 1 |
| 42 | DUP240905 | PIN, DOWEL | 2 |
| 43 | DUP91347 | BOLT M8X30 | 6 |
| 44 | DUP96058 | GASKET,CYLINDER HEAD | 1 |
| 45 | DUP91359 | BOLT | 4 |

| No. | Part number | Description | Qty |
|-----|---------------|---------------------------------|-----|
| 46 | DUP97109 | SPARK PULG | 1 |
| 47 | DUP241901 | ROD,PUSH | 2 |
| 48 | DUP240501 | SHROUD | 1 |
| 49 | DUP91325 | BOLT M6X12 | 13 |
| 50 | DUP96045 | PACKING,HEADCOVER | 1 |
| 51 | DUP241111 | COVER COMP,CYLINDER HEAD | 1 |
| 52 | DUP245702 | WIND SHIEL COMP. | 1 |
| 53 | DUP91330 | BOLT M6X20 | 1 |
| 54 | DUP240401 | FLYWHEEL ASSEMBLY | 1 |
| 55 | DUP244601 | FAN,RECOIL STARTER | 1 |
| 56 | DUP244503 | PULLEY,STARTER | 1 |
| 57 | DUP90003 | NUT | 1 |
| 58 | DUP97516 | IGNITION COIL ASSY | 1 |
| 59 | DUP91331 | BOLT M6X25 | 2 |
| 60 | DUP96047 | PACKING,INTAKE | 1 |
| 61 | DUP242301 | INSULATOR,CARBURETOR | 1 |
| 62 | DUP96051 | PACKING,CARBURETOR | 1 |
| 63 | DUP94229 | GASKET,BREATHER | 1 |
| 64 | DUP242701 | ROD,GOVERNOR | 1 |
| 65 | DUP244208 | SPRING,THROTTL RETURN | 1 |
| 66 | DUP244702-010 | RECOIL STARTER ASSEMBLY | 1 |
| 67 | DUP245205 | SWITCH ASSEMBLY | 1 |
| 68 | DUP244403 | SHROUD ASSY,UPPER | 1 |
| 69 | DUP242904 | AIR CLEANER ASSEMBLY | 1 |
| 70 | DUP244101 | SPRING,GOVERNOR | 1 |
| 71 | DUP245104 | AMPLIFIER | 1 |
| 72 | DUP96054 | PACKING,EXHAUST | 1 |
| 73 | DUP243707 | MUFFLER COMP | 1 |
| 74 | DUP90011 | NUT M8 | 2 |
| 75 | DUP94206 | SPRING WASHER Φ 8 | 2 |
| 76 | DUP245601-313 | DIPSTICK | 1 |
| 77 | DUP240179-010 | FUEL TANK ASSEMBLY | 1 |
| 78 | DUP91818 | ADJUSTER ROCKER ARM | 2 |
| 79 | DUP95603 | TUBE,BREATHER | 1 |
| 80 | DUP519201 | FUEL TANK CAP COMP | 1 |
| 81 | DUP91333 | BOLT M6X28 | 1 |
| 82 | DUP240801 | CLIP | 1 |
| 83 | DUP94543 | FIBERGLASS PIPE Φ 12x170mm | 1 |
| 84 | DUP240346 | CRANKSHAFT ASSEMBLY | 1 |
| 85 | DUP94483 | FUEL LINE RUBBER SLEEVE | 1 |
| 86 | DUP95903 | VENTILATION TUBE PROTECTOR | 1 |
| 87 | DUP95303 | CONNECTING PIPE | 1 |
| 88 | DUP503034 | CLIP,FUEL LINE ϕ 9.5*0.8 | 1 |
| 89 | DUP94408 | CLIP,FUEL LINE Φ 10 | 1 |
| 90 | DUP245405 | MANUAL CHOKE ASSEMBLY | 1 |

| No. | Part number | Description | Qty |
|-----|-------------|-------------------|-----|
| 91 | DUP246503 | FLAT KEY | 1 |
| 92 | DUP99505 | FUNNEL | 1 |
| 93 | DUP99033 | SPARK PLUG SOCKET | 1 |