

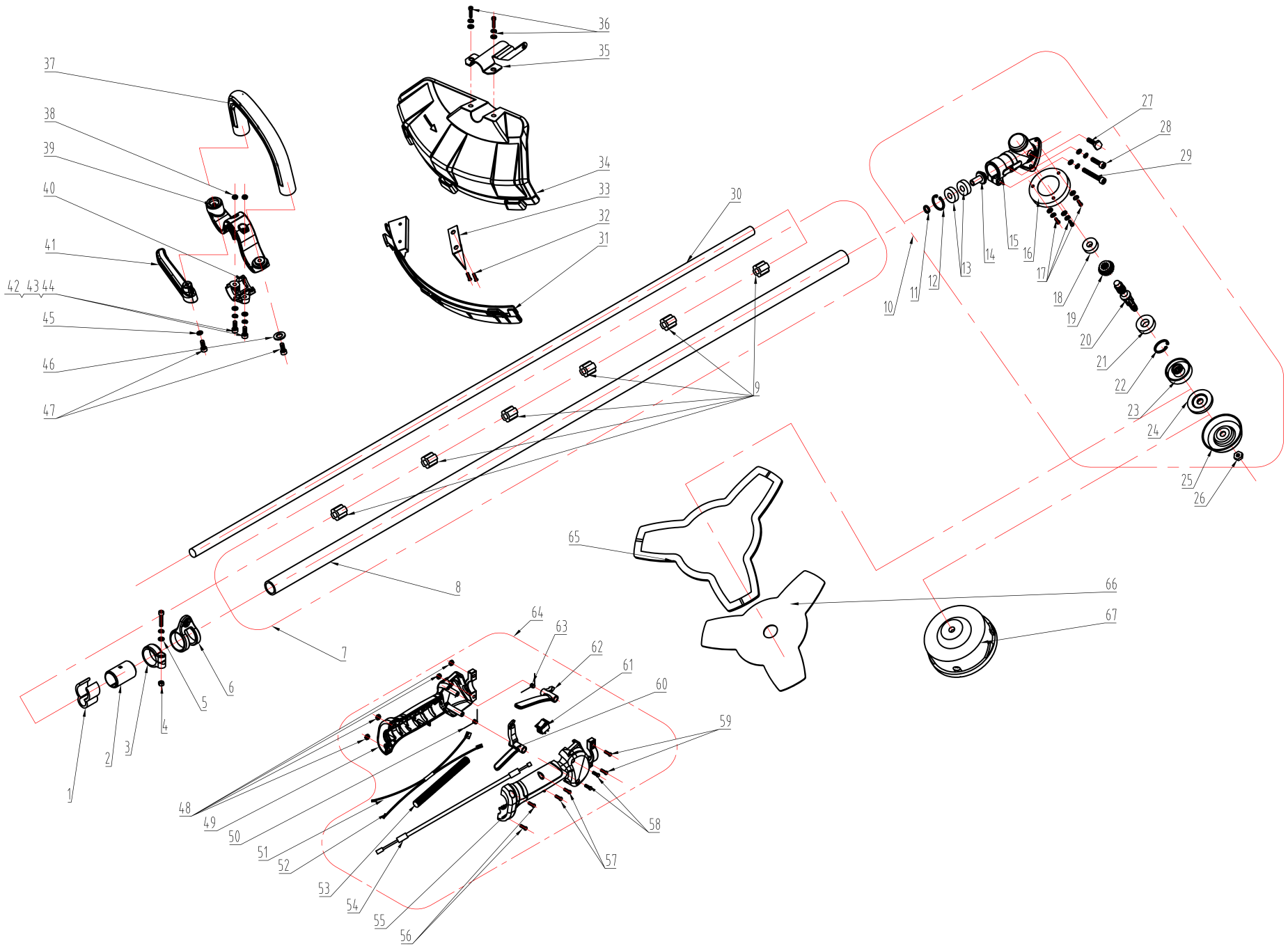
DUCAR

Equipment parts manual

Model : DUETBC261S
Straight brushcutter-25.4CC



Picture may not reflect the exact model



No.	Part number	Description	Qty
1	C43.1100.0003	wire bracket	1
2	C33.2112.0201	sleeve 26	1
3	C33.2112.0203	clamp	1
4	GB/T6170-20061375	nut M5	1
5	GB/T2671.220061081	screw M5x22	1
6	C33.2112.0204	harness clamp assembly	1
7	C43.1312.0100	straight shaft assembly	1
8	C43.1312.0101	AL tubing	1
9	C43.1112.0300	gasket	6
10	C43.1116.0000	gear box assembly	1
11	GB/T894.1-20061547	circlip 10	1
12	GB/T893.1-20061537	circlip 26	1
13	GB/T276-20061613	ball bearing 6000-2z	2
14	C43.0116.0002	pinion	1
15	C43.1116.0001	gear box	1
16	C43.0116.0007	top guard	1
17	GB/T70.1	screw M5x8	3
18	GB/T276-20061613	bearing 6000-2z 10x26x8	1
19	C43.0116.0004	gear	1
20	C43.1116.0002	gear shaft	1
21	GB/T276-20061616	ball bearing 6002-2z	1
22	GB/T893.1-20061537	circlip 26	1
23	C43.1116.0004	blade retainer	1
24	C43.1116.0003	cap washer	1
25	C43.1116.0005	bottom guard	1
26	GB/T6177.220055871	flange nut M10x1.25 left	1
27	GB/T70.1	screw M6x12	1
28	GB/T2671.2	screw M6x12	1
29	GB/T2671.2	screw M6x25	1
30	C43.0112.0001	driver shaft	1
31	C43.1113.0101	sheild edge strips	1
32	GB/T845-20051827	ST screw 4.8x13	2
33	C43.1113.0002	cutting blade	1
34	C43.1113.0200	guard	1
35	C43.1113.0001	clamp \ guard	1
36	GB/T2671.220060988	screw M6x20	2
37	C43.1311.0101	front handle	1
38	GB/T6170-20061375	nut M5	2
39	C43.1311.0102	handle base	1
40	C43.1311.0103	clamp	1
41	C43.1311.0104	bar	1

No.	Part number	Description	Qty
42	GB/T2671.2	screw M5x28	2
43	GB/T93-20054560	lock washer 5	2
44	GB/T97.1	plate washerΦ5*12*1.5	2
45	GB/T97.1	plate washer Φ5*11*2	1
46	GB/T97.1	plate washerΦ5*12*1.5	1
47	GB/T845	ST screw 4.8x19	2
48	GB/T6170-20061375	nut M5	4
49	C43.1311.0201	plastic handle \ LH	1
50	C43.1311.0205	spring \ trigger	1
51	C43.1311.0208	wire cable A	1
52	C43.1311.0209	wire cable B	1
53	C43.1311.0210	wire tube	1
54	C43.1311.0207	throttl cable assembly	1
55	C43.1311.0202	plastic handle \ RH	1
56	GB/T2671.220054551	screw M5x14	2
57	GB/T845-20051727	ST screw 3.5x9.5	2
58	GB/T845-20055741	ST screw ST4.2x10	2
59	GB/T2671.220054551	screw M5x14	2
60	C43.1311.0204	trigger	1
61	A38.0306.0500	extinction switch - reg	1
62	PC43.1311.0203	lock trigger	1
63	C43.1311.0206	spring \ trigger	1
64	C43.1311.0200	rubber handle	1
65	C43.1100.0005	blade cover	1
66	C43.0100.0001	Blade A, 3 teethed, square ended	1
67	C43.0100.0100	string head assembly	1