

POWERED BY

**DUCAR**

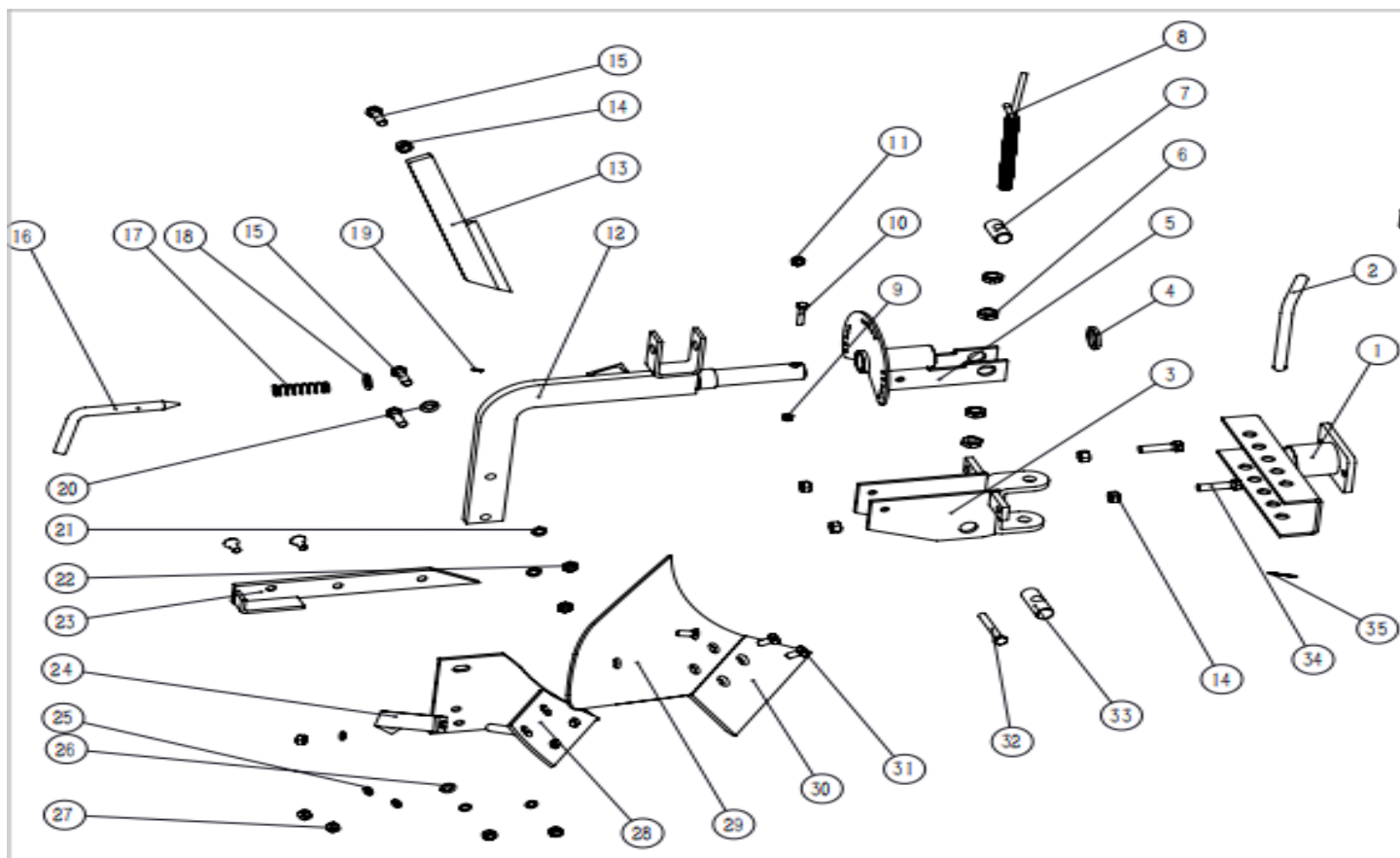
PROPULSÉ PAR

# Rotary moldboard plow for DCS DUEDCS-RTP



**PARTS MANUAL**

# MOLDBOARD PLOW ASSEMBLY



No.	Product code	Description	Quantity
1	DUPYX7Li-01000000	connect base	1
2	DUPYX7Li-02000000	pin	1
3	DUPYX7Li-03000000	upper and lower adjustment base	1
4	DUPYX7Li-04000000	Gasket	1
5	DUPYX7Li-05000000	rotary adjust seat	1
6	DUPGB/T 6172.1-2000	hexagon thin nut A and B	4
7	DUPYX7Li-06000000	pin shaft	1
8	DUPYX7Li-07000000	adjusting handle	1
9	DUPGB/T 6182-2010	Hexagon lock nut with non-metallic insert	1
10	DUPGB/T 5780-2016	hexagon headed bolt	1
11	DUPGB/T 6182-2010	Hexagon lock nut with non-metallic insert	1
12	DUPYX7Li-08000000	plough mouting bracket	1
13	DUPYX72Li-03000000	straight blade	1
14	DUPGB/T 6170-2000	hexagon nut	5
15	DUPGB/T 5783-2016	hexagon screw full thread	3
16	DUPYX7Li-10000000	swivel fixed pin	1
17	DUPYX7Li-11000000	rotary latch spring	1
18	DUPGB/T 97.1-2002	16flat washer	1
19	DUPGB/T 879.3-2018	elastic cylindrical pin	1
20	DUPGB/T 97.1-2002	12flat washer	1
21	DUPGB/T 93-1987	standard elastic gasket	2

22	DUPGB/T 6172.1-2000	hexagon thin nut A and B	2
23	DUPYX7Li-12000000	bottom support	1
24	DUPYX7Li-13000000	connect rod	1
25	DUPGB/T 93-1987-1	standard elastic gasket	6
26	DUPGB/T 97.1-2002	10flat washer	4
27	DUPGB/T 6170-2000	hexagon nut	6
28	DUPYX7Li-14000000	blade fix bracket	1
29	DUPYX7Li-15000000	big blade	1
30	DUPYX7Li-16000000	small blade	1
31	DUPGB/T 70.3-2008	inner hexagon countersunk head bolt	6
32	DUPGB/T 5782-2000	hexagon bolt	1
33	DUPYX7Li-17000000	pin shaft	1
34	DUPGB/T 5781-2016	hexagon bolt M12X50	2
35	DUPQC/T 623	circlip latch	1