

**POWERED BY**

**DUCCAR**

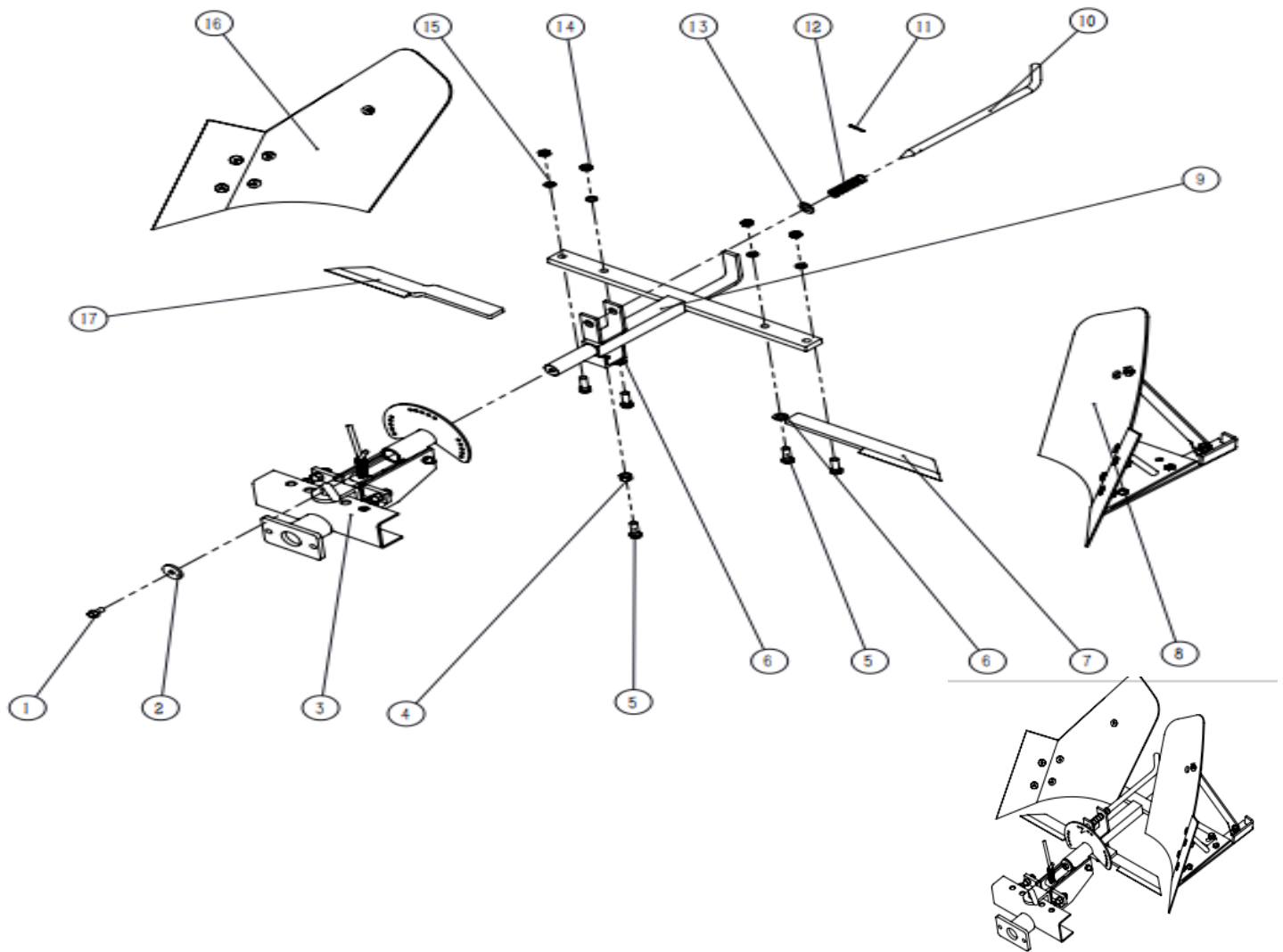
**PROPULSÉ PAR**

**Moldboard plow for DCS  
DUEDCS-MP**



**PARTS MANUAL**

# MOLDBOARD PLOW ASSEMBLY



No.	Product code	Description	Quantity
1	DUPGB/T 5789-1986	hexagon flange bolt	1
2	DUPYX72Li-01000000	gasket	1
3	DUPYX72Li-02000000	front connect	1
4	DUPGB/T 6170-2000	hexagon nut	1
5	DUPGB/T 5783-2016	hexagon screw full thread	5
6	DUPGB/T 97.1-2002	12flat washer	2
7	DUPYX72Li-03000000	straight blade	1
8	DUPYX72Li-04000000	plow right	1
9	DUPYX72Li-05000000	double plough mouting braket	1
10	DUPYX72Li-06000000	swivel fixed pin	1
11	DUPGB/T 879.3-2018	elastic cylindercal pin	1
12	DUPYX7Li-11000000	rotary latch spring	1
13	DUPGB/T 97.1-2002	16flat washer	1
14	DUPGB/T 6172.1-2000	hexagon thin nut A and B	4
15	DUPGB/T 93-1987	standard elastic gasket	4
16	DUPYX72Li-07000000	plow left	1
17	DUPYX7Li-09000000	straight curved blade	1