

POWERED BY

DUCAR

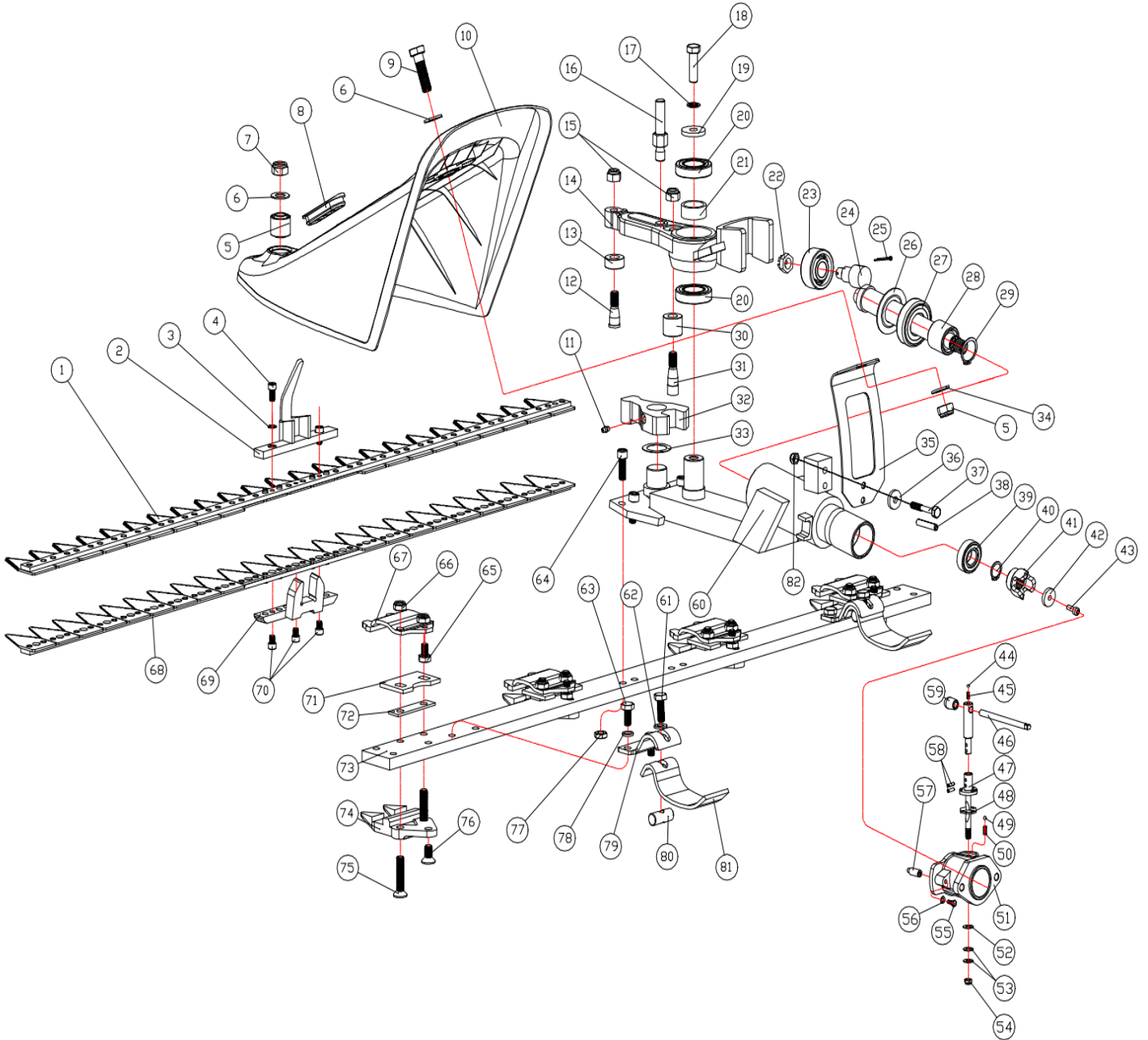
PROPULSÉ PAR

**48" cutting bar mower for DCS
DUEDCS-SB48**



PARTS MANUAL

CUTTING BAR MOWER ASSEMBLY



No.	Product code	Description	Quantity
1	DUPLD-T05-07010200	Upper Blade	1
2	DUPDUPLD-T05-07010800	Swing Block Assembly	1
3	DUPLD-T05-070113	Absorbing Washer	2
4	DUPGB/T70.1-2000	Screw M8X16	2
5	DUPLD-T05-07011401	Cover Absorbing Block	2
6	DUPGB/T955-87	Wave Washer	2
7	DUPGB/T889.1-2000	Lock Nut M14	2
8	DUPLD-T05-07011403	Checking Hole Cover	1
9	DUPGB/T5782-2000	Bolt M14x50	1
10	DUPLD-T05-070114020	Shield	1

11	DUPLD-T05-07020302	Oil Mouth	1
12	DUPLD-T05-07020507	Taper Bolt	1
13	DUPLD-T05-07020506	Upper Swing Block	1
14	DUPLD-T05-07020501	Upper Rocker Arm	1
15	DUPGB/T889.1-2000	Lock Nut M12	2
16	DUPLD-T05-07020505	Two-end Bolt	1
17	DUPGB862.2-87	Lock Washer 12	1
18	DUPGB/T5783-2000	Bolt M12x30	1
19	DUPLD-T05-070204	Washer 12.5X36X5	1
20	DUPGB276-94	Bearing 6006-2RS	2
21	DUPLD-T05-07020502	Bearing Bush	1
22	DUPGB6178-86	Slot Nut M14	1
23	DUPGB276-94-1	Bearing 62304-2RS	1
24	DUPLD-T05070260300	Camshaft Part	1
25	DUPGB/T91-2000	Split Pin 3.2X26	1
26	DUPLD-T050702601	Shaft Retainer	1
27	DUPGB276-94-2	Bearing 6206-2RS	1
28	DUPLD-T05070602	Busing30X38X31.5	1
29	DUPGB/T894.1-86	Retainer 30	1
30	DUPLD-T05-07020503	Position Cover	1
31	DUPLD-T05-07020504	Taper Bolt	1
32	DUPLD-T05-07020301	Down Swing Arm	1
33	DUPLD-T05-070202	Steel Washer	1
34	DUPGB/T97.1-2002	Flat Washer	1
35	DUPLD-T05-070201	Shield Frame	1
36	DUPLD-T05-070207	Thicken Washer	1
37	DUPGB/T5782-2000	Bolt M8x50	1
38	DUPGB/879.1-2000	Spring Pin	1
39	DUPGB276-94	Bearing 6004-2RS	1
40	DUPGB/T894.1-86-1	Shaft Retainer 20	1
41	DUPLD-T05-070208	Connecting Head	1
42	DUPLD-T05-070209	Thicken Washer 6.5X24X4.5	1
43	DUPGB/T70.1-2000	Screw M6X20	1
44	DUPGB/T308-2002	Steel Ball4.7625	1
45	DUPLD-T05-07030103	Pressure Spring	1
46	DUPLD-T05-07030104	Handle Lever	1
47	DUPLD-T05-0703010500	Connecting Shaft	1
48	DUPLD-T05-070302	Washer Block	1
49	DUPGB/T308-2002-1	Steel Ball6.35	1
50	DUPLD-T05-070303	Pressure Spring	1
51	DUPLD-T05-070305	Multi-fuction Head	1
52	DUPLD-T05-070304	Adjusting Washer	1
53	DUPGB/T860-1987	Spring Washer	1
54	DUPGB/T889.1-2000	Lock Nut	1
55	DUPGB/T5783-2000	Bolt M6x15	1

56	DUPGB/T93-87	Spring Washer 6	1
57	DUPLD-T05-070306	Position Shaft	1
58	DUPGB/T879.3-2000	Spring Pin5x16	2
59	DUPLD-T05-07030101	Handle Cover	1
60	DUPLD-T05-070210	Rocker Arm Assemy	1
61	DUPGB/T5783-2000	Bolt M10x30	2
62	DUPGB/T97.1-2002	Washer 10	2
63	DUPGB/T5783-2000	Bolt M10x25	4
64	DUPGB/T70.1-2000	Screw M10x30	4
65	DUPGB/T5783-2000	Bolt M10x16	4
66	DUPGB/T889.1-2000	Lock Nut M10	8
67	DUPLD-T05-07011000	Pressure Plate	4
68	DUPLD-T05-07011200	Down Blade	1
69	DUPDUPLD-T05070108001	Down Swing Block	1
70	DUPGB/T70.1-2000	Screw M8x10	3
71	DUPLD-T05-07010900	Adjusting Block	4
72	DUPLD-T05-070103	Washer Block	4
73	DUPLD-T05-070106	Beam	1
74	DUPLD-T05-07010100	Down Blade Sear	4
75	DUPGB/T70.3-2000	Screw M10X1.5X45	8
76	DUPGB/T70.3-2000	Screw M10X1.5X15	4
77	DUPGB/T6172.1-2000	Thin Nut M10x1.5	4
78	DUPGB93-87	Spring Washer 10	4
79	DUPLD-T05-07011100	Connecting Seat	2
80	DUPLD-T05-070105	Lock Nut	2
81	DUPLD-T05-070104	Height adjusting Block	2
82	DUPGB/T889.1-2000	Lock Nut	1