

POWERED BY

DUCAR

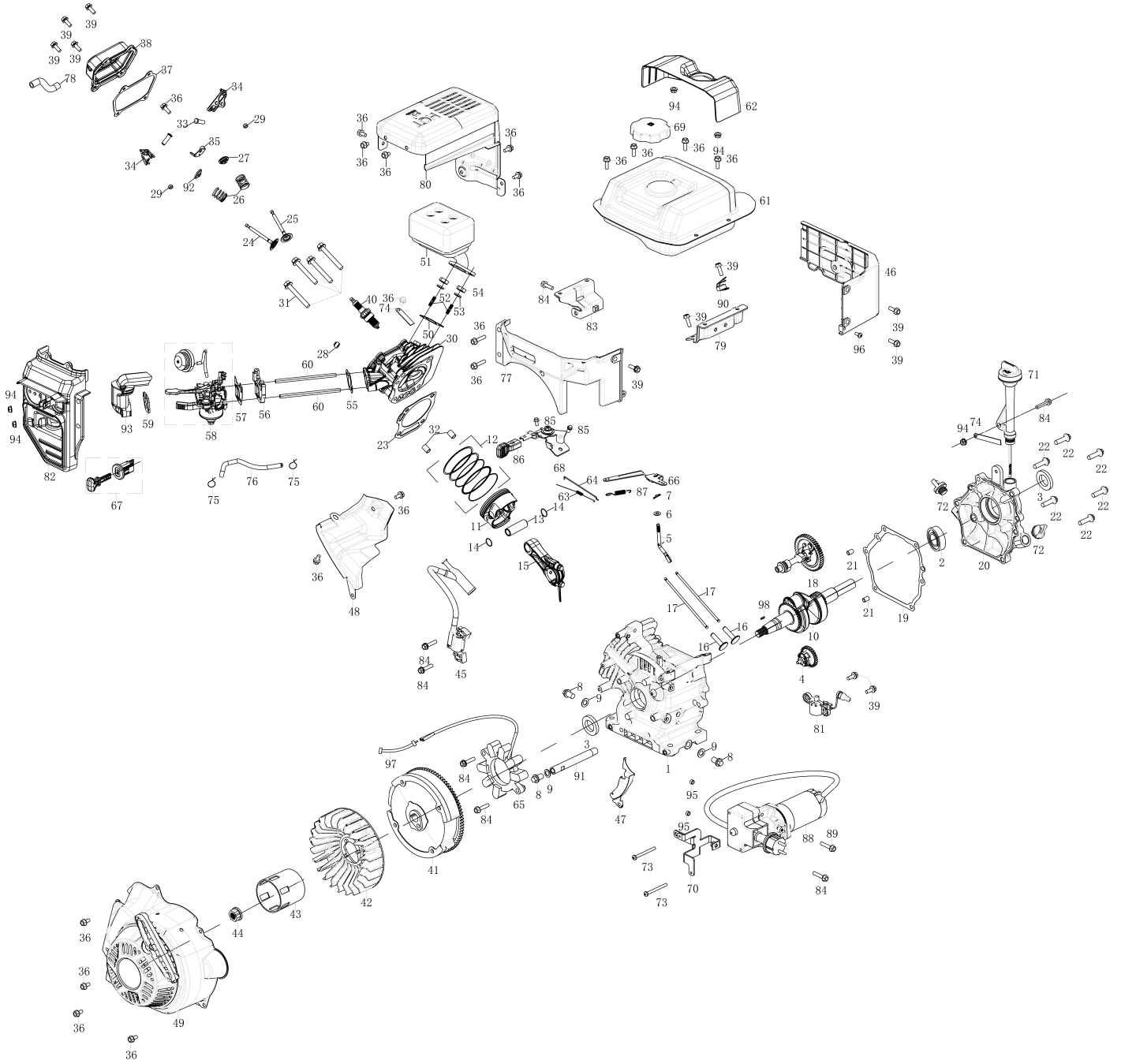
PROPULSÉ PAR

**POWER BRUSH
DUEPB24 & DUEPB32**



ENGINE PARTS MANUAL

ENGINE



ENGINE

No.	Part number	Description	Quantity
1	DUP342060	CRANKCASE	1
2	DUP93009	BEARING	1
3	DUP93508	CRANKCASE OIL SEAL	2
4	DUP244302	CENTRIFUGAL GOVERNOR GEAR ASSEMBLY	1
5	DUP342109	SWINGING ROD	1
6	DUP96804	SWINGING ROD GASKET	1
7	DUP243902	RETAINING CLIP	1
8	DUP91816	OIL DRAIN BOLT	3
9	DUP94007	OIL DRAIN BOLT WASHER	3
10	DUP342010	CRANKSHAFT	1
11	DUP342023	PISTON	1
12	DUP342022	PISTON RING ASSEMBLY	1
13	DUP342021	PISTON PIN	1
14	DUP342020	PISTON PIN RING	2
15	DUP342016	CONNECTING ROD ASSEMBLY	1
16	DUP342006	VALVE LIFTER	2
17	DUP342028	PUSH ROD	2
18	DUP342005	CAMSHAFT ASSEMBLY	1
19	DUP96310	CRANKCASE GASKET	1
20	DUP342040	CRANKCASE COVER	1
21	DUP240904	CRANKCASE LOCATING PIN	2
22	DUP91347	BOLT M8*30	6
23	DUP96311	CYLINDER HEAD GASKET	1
24	DUP342018	INTAKE VALVE	1
25	DUP342015	EXHAUST VALVE	1
26	DUP342067	VALVE SPRING	2
27	DUP241802	EXHAUST VALVE SPRING SEAT	1
28	DUP241806	VALVE SEAL	1
29	DUP241804	TOP CAP	2
30	DUP342013	CYLINDER HEAD	1
31	DUP91359	BOLT M8X60	4
32	DUP240905	CYLINDER HEAD LOCATING PIN	2
33	DUP342002	ROCKING ARM SHAFT	2
34	DUP342000	ROCKING ARM	2
35	DUP342001	ROCKER SHAFT FIXING BRACKET	1
36	DUP91325	BOLT M6X12	19
37	DUP96312	CYLINDER HEAD COVER GASKET	1
38	DUP342026	CYLINDER HEAD COVER	1
39	DUP91329	BOLT M6X16	11
40	DUP97110	SPARK PLUG	1
41	DUP240096	FLYWHEEL ASSEMBLY	1
42	DUP244613	IMPELLER	1
43	DUP244508	STARTER PULLEY	1
44	DUP90003	NUT M14*1.5	1
45	DUP97654	IGNITER	1
46	DUP342056	PANEL,RH	1

47	DUP342009	SHROUD	1
48	DUP342077	WIND-LEAD-COVER	1
49	DUP342039-175A	RECOIL STARTER ASSEMBLY	1
50	DUP96055	EXHAUST GASKET	1
51	DUP342043	MUFFLER	1
52	DUP91007	AIR EXHAUST STUD STUD BOLT	2
53	DUP94206	SPRING WASHER	2
54	DUP90011	NUT M8	2
55	DUP96313	INTAKE GASKET	1
56	DUP342025	CARBURETOR CONNECTION BLOCK	1
57	DUP96051	CARBURETOR GASKET	1
58	DUP342074-175	CARBURETOR ASSEMBLY	1
59	DUP94226	STEEL WASHER	1
60	DUP91036	DOUBLE END BOLT	2
61	DUP342053-175	FUEL TANK	1
62	DUP342054	OIL DIPSTICK DECORATIVE PANEL	1
63	DUP342046	SPRING C	1
64	DUP342047	THROTTLE LEVER	1
65	DUP97229	CHARGING COIL	1
66	DUP342049	SPEED REGULATING ARM	1
67	DUP225201	ENGINE SWITCH	1
68	DUP342050	SPEED CONTROLLER	1
69	DUP243603-010	FUEL CAP	1
70	DUP342051	CONTROL BOX INSTALLATION BRACKET	1
71	DUP342041-276	DIPSTICK ASSEMBLY	1
72	DUP241401-276	OIL PLUG	2
73	DUP91413	SCREW M4x55	2
74	DUP599601	METAL CLIP	2
75	DUP94423	FUEL LINE CLAMP $\phi 9$	2
76	DUP97702	FUEL LINE	1
77	DUP342055	FRONT DECORATIVE PANEL	1
78	DUP95675	EXHAUST PIPE	1
79	DUP342064	FUEL TANK RIGHT BRACKET FIXING PLATE	1
80	DUP342044	SHIELD	1
81	DUP342019	OIL SENSOR	1
82	DUP342052	DECORATIVE BOARD	1
83	DUP342063	FUEL TANK LEFT BRACKET FIXING PLATE	1
84	DUP91334	BOLT M6X30	7
85	DUP91340	BOLT M6*28	2
86	DUP244412	SPEED PEGULATING HANDLE	1
87	DUP342048	SPRING	1
88	DUP97487	STARTING MOTOR ASSEMBLY	1
89	DUP91337	BOLT M6*40	1
90	DUP245104	OIL PROTECTOR	1
91	DUP92115	COIL	1
92	DUP241801	INTAKE VALVE SPRING SEAT	1
93	DUP342045	HEATING PIPE	1
94	DUP90035	NUT	5

95	DUP200901	LOCATING PIN	2
96	DUP92251	SCREW	1
97	DUP342107	WIRING HARNESS	1
98	DUP840142	THE CRANKSHAFT FLAT KEY	1